

Design Idea

The coffeehouse concept is based on a simple structure partitioned into 5 boxes. The displacement between the 5 boxes forms three separate patios, each with its own theme.

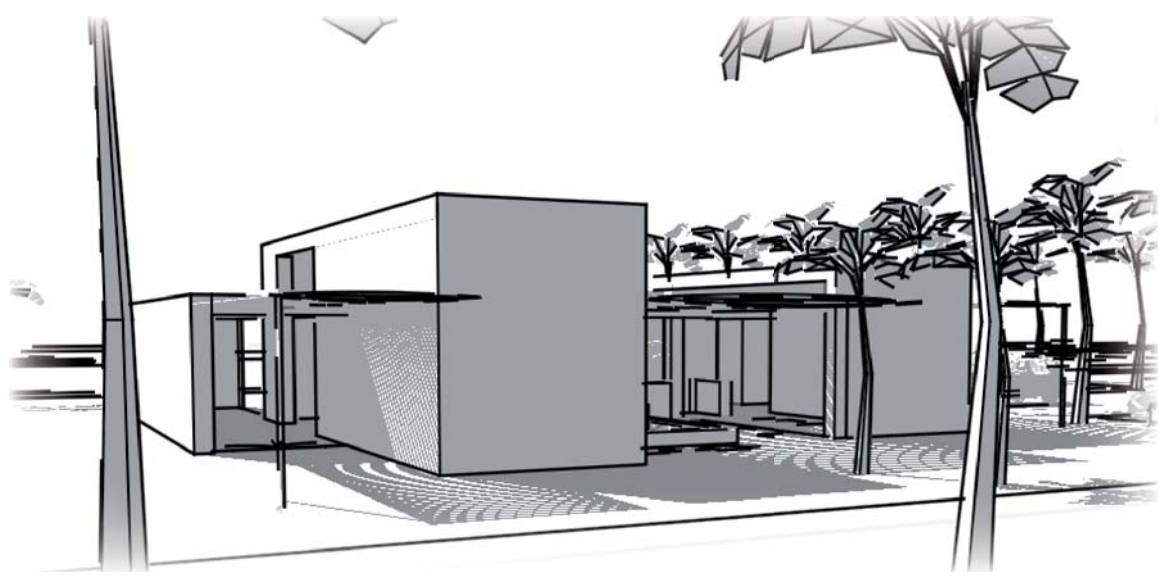
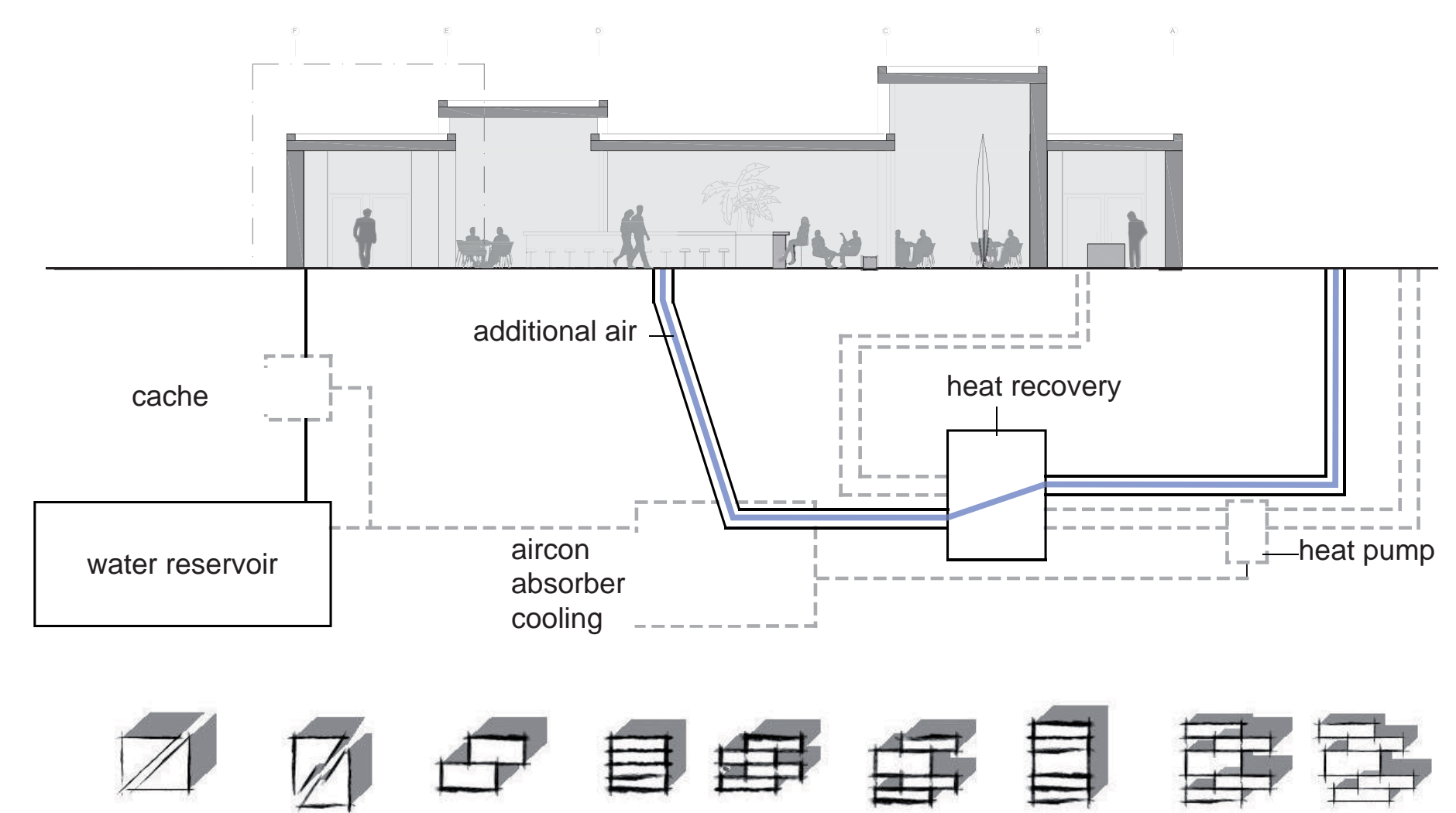
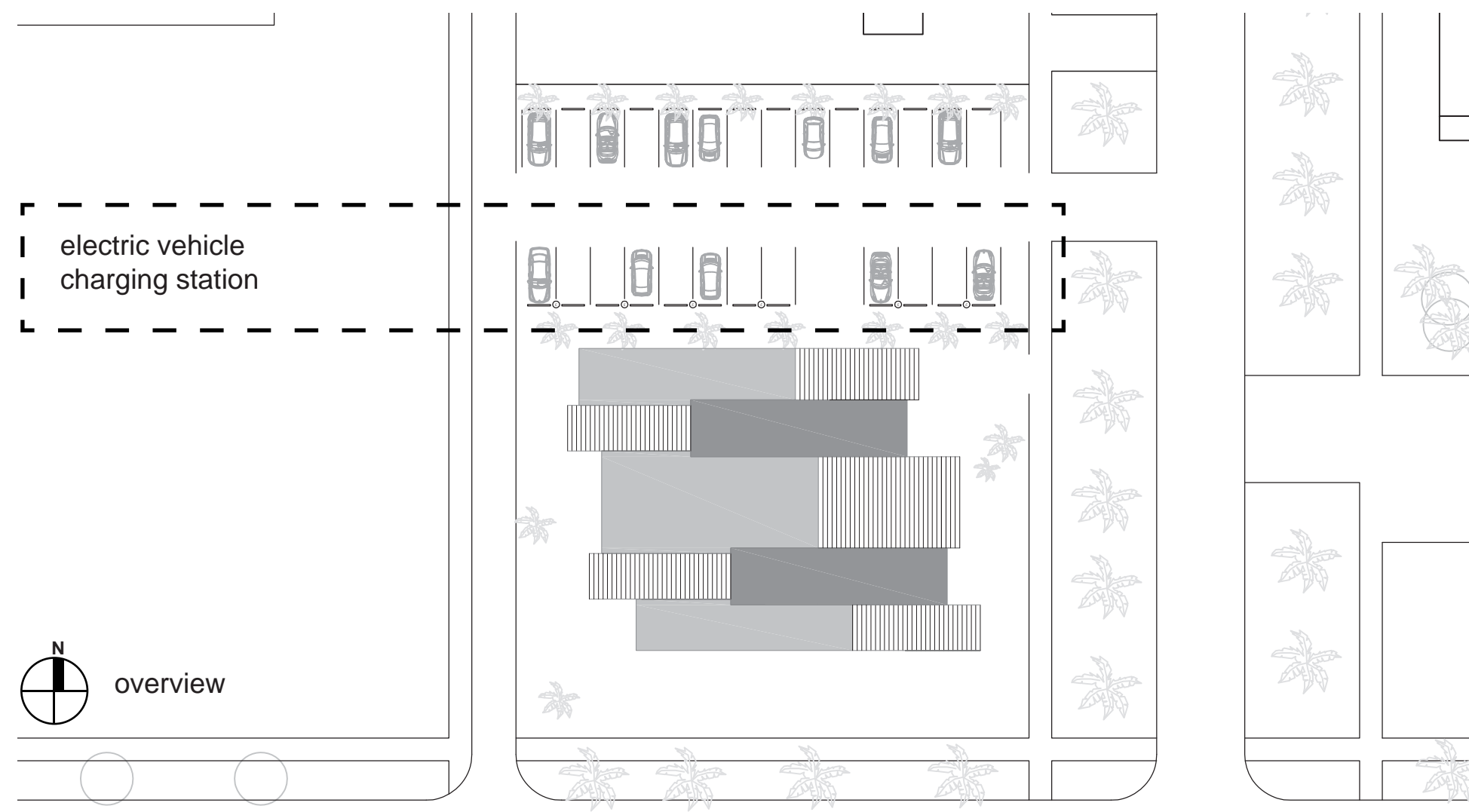
The structure may be entered from the Main Street in the south and the parking space in the north. It is designed, however, to shield the interior from direct sunlight coming from the South and to prevent a direct view of the parking space in the north.

The topology and the supporting structure are designed through widespread, "L"-shaped cellular concrete elements, which create an introverted building and connect it to the patios.

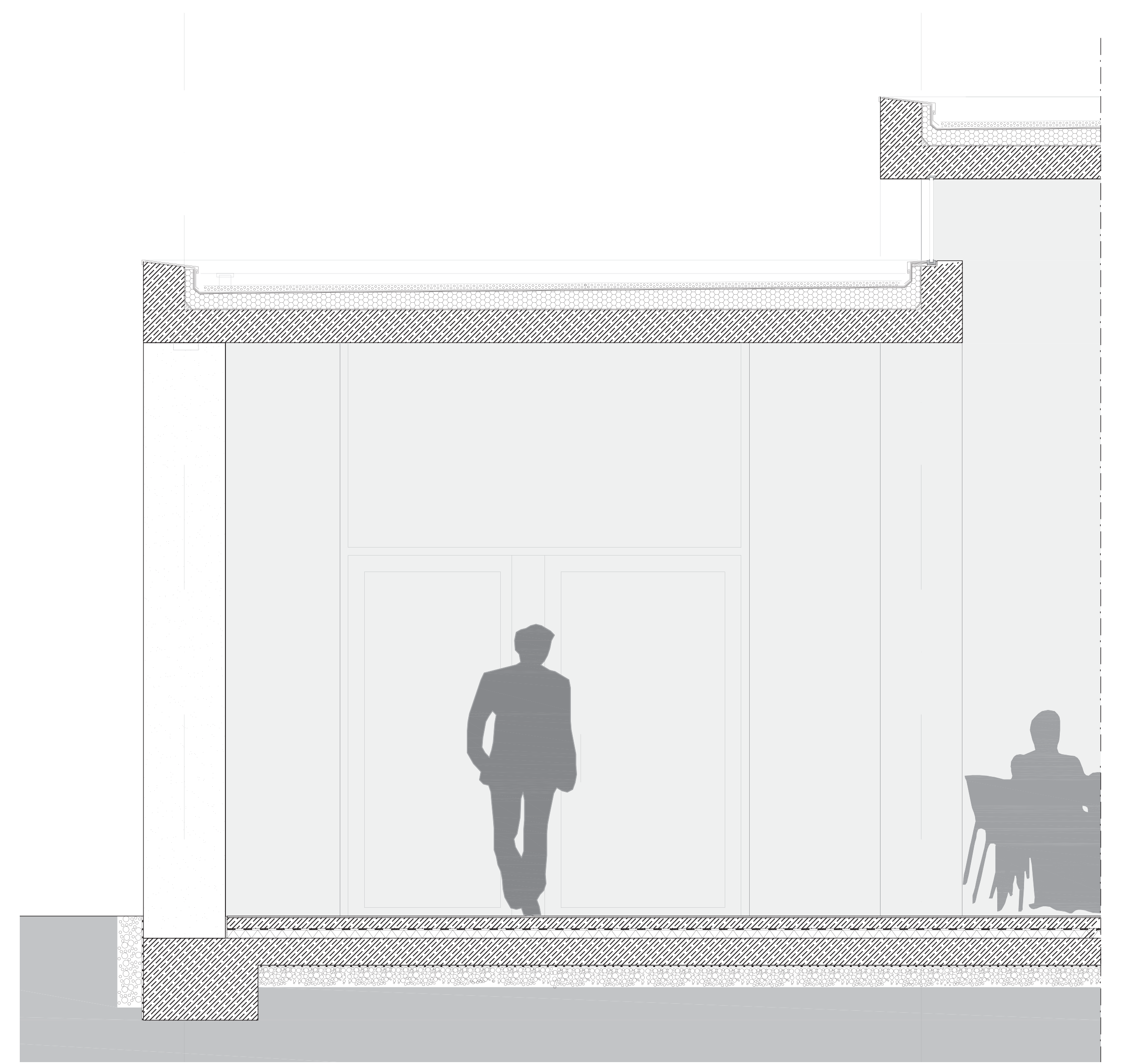
The idea is to allow every guest to have access to the relaxing and enjoyable oasis atmosphere – brought forth by the water stream, the pool and the greenery – in the hot Arizona climate.

The bar is located in the center of the coffeehouse; this provides the personnel with constant visibility of their guests and allows for quick and efficient service.

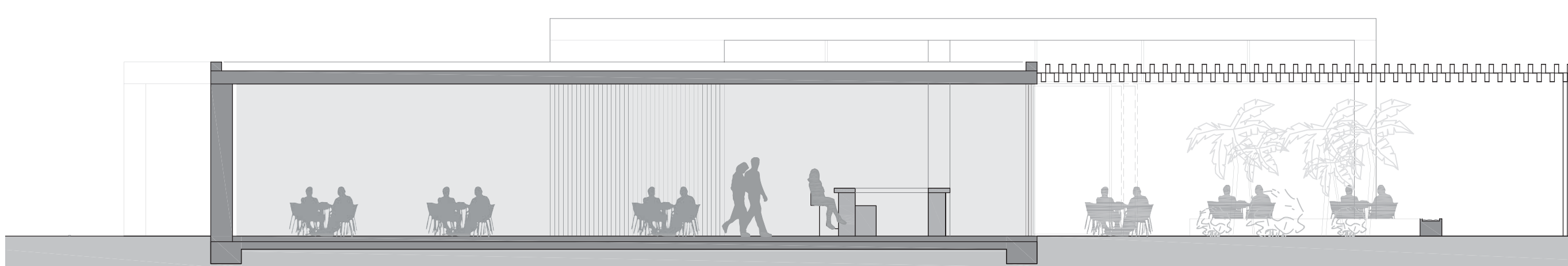
The cellular concrete, called face-change-material contains capsules which have the ability to take on the heat through the day, hold it and release it at nightfall.



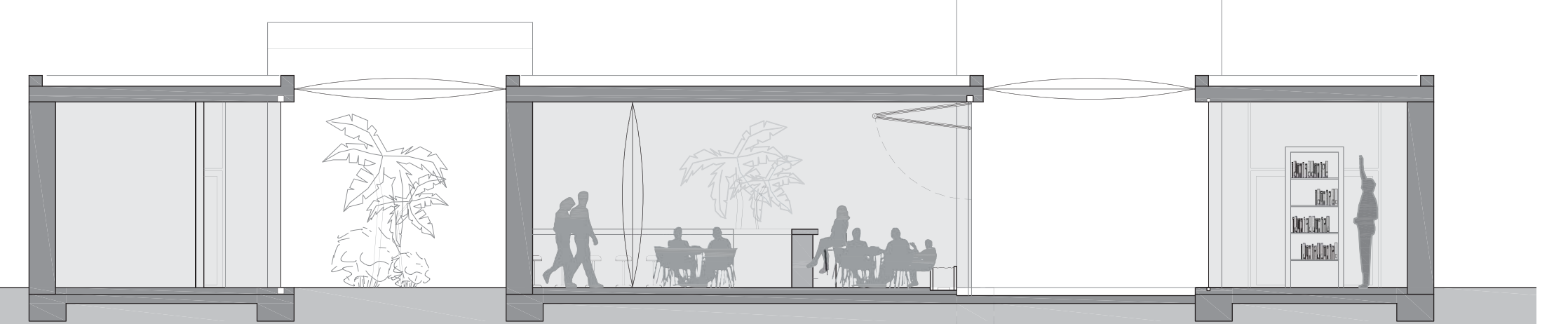
floorplan



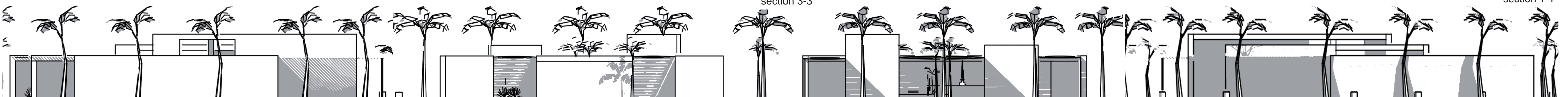
detailed section



section 3-3



section 1-1



south view

west view

east view

north view

