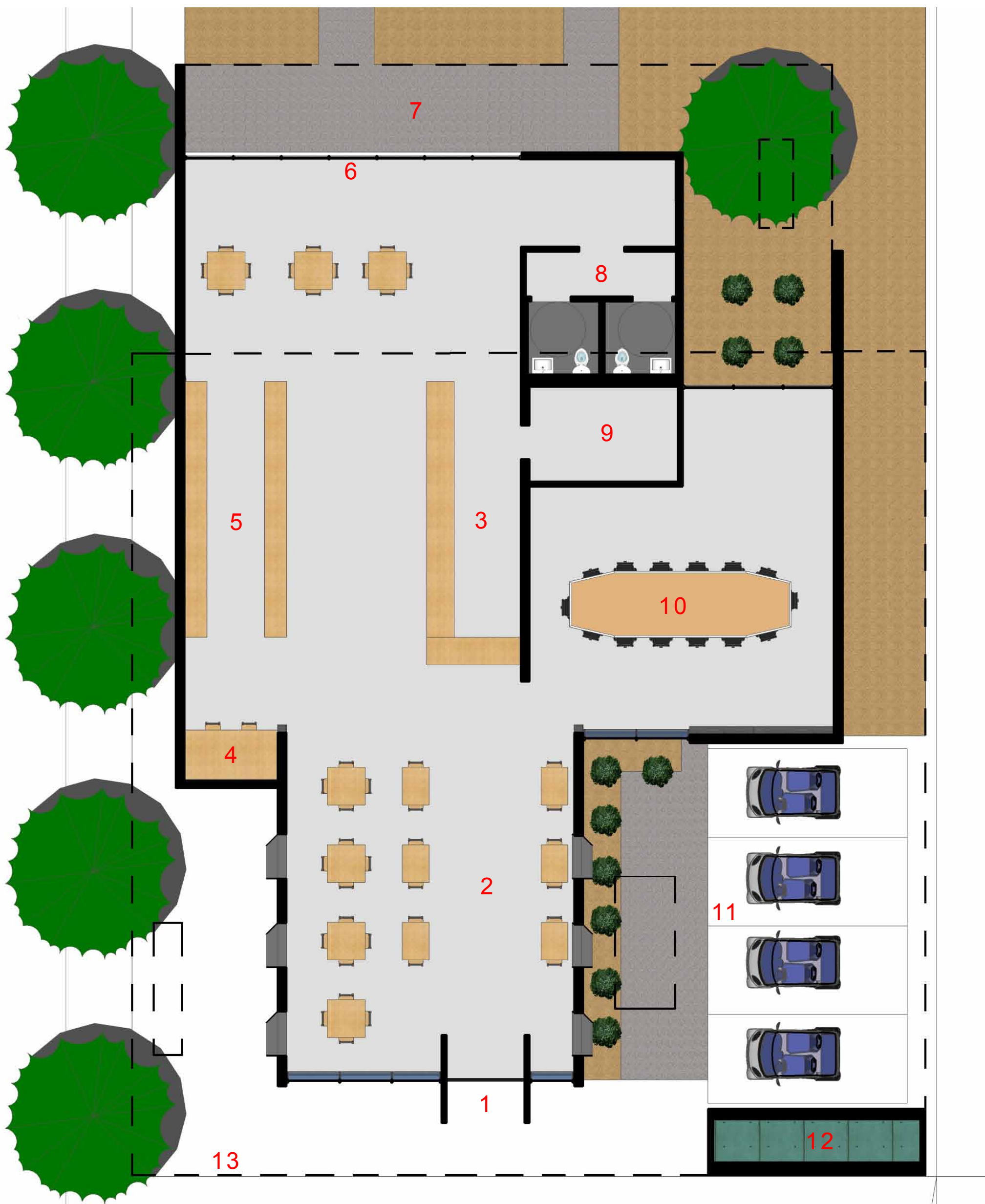


The Morning Mud

a responsible desert coffee house

sustainable features:

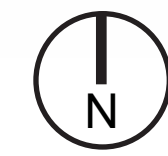
- tilt-up concrete insulated wall system
- 3kw photovoltaic system
- roof harvested rainwater
- green roof
- calculated overhangs allow shade in summer and warming sun in winter
- minimal fenestration on east and west facades reduces energy consumption.



Legend-

- | | |
|------------------------|------------------------------|
| 1. entry | 8. restrooms |
| 2. seating area | 9. storage |
| 3. coffee bar | 10. conference room |
| 4. computer stations | 11. charging stations |
| 5. bookstore | 12. water harvesting cistern |
| 6. sliding glass doors | 13. edge of roof (above) |
| 7. outdoor seating | |

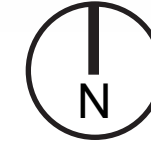
floor plan



Legend-

1. 3kw photovoltaic array
2. green roof
3. outdoor seating
4. parking / charging
5. native mesquite trees

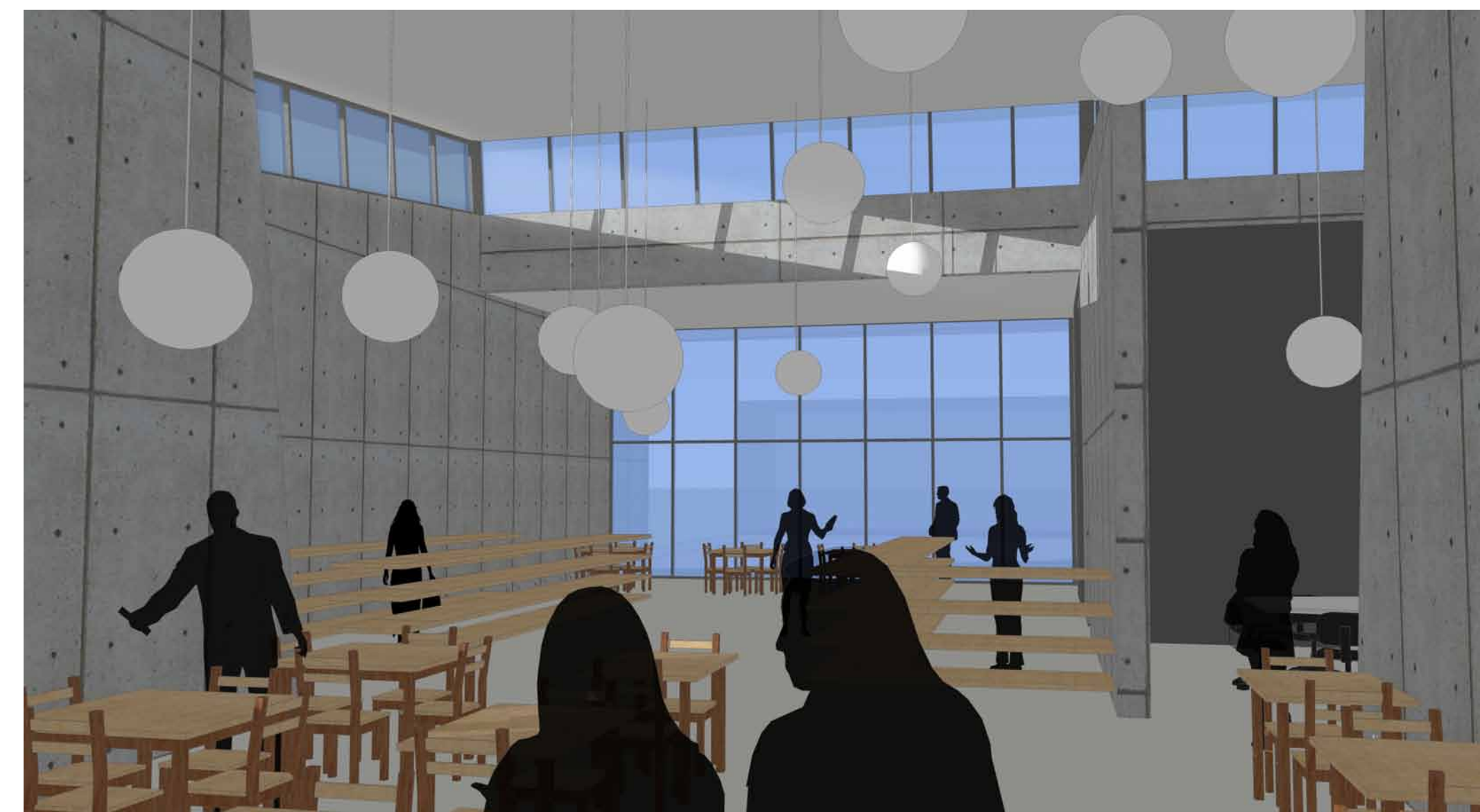
site plan



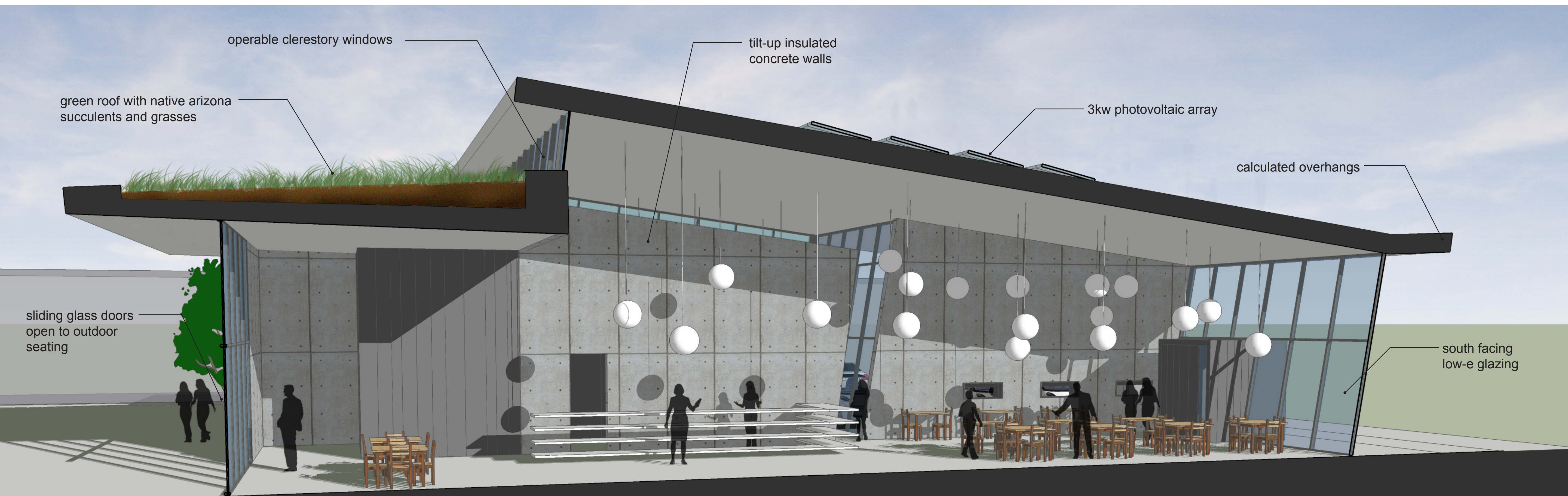
view from southeast



view from south



view from interior



section perspective