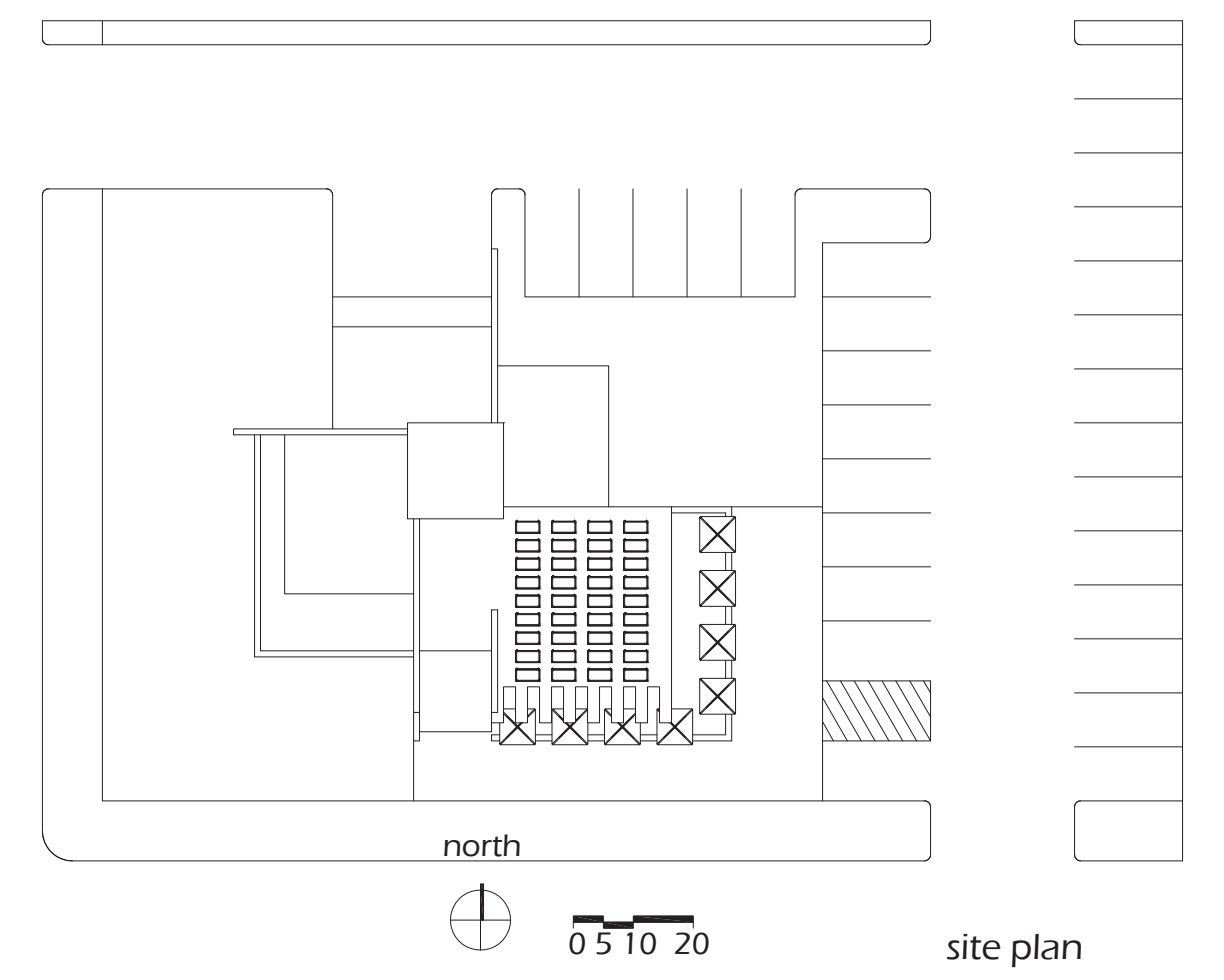


# universal cafe



southeast perspective

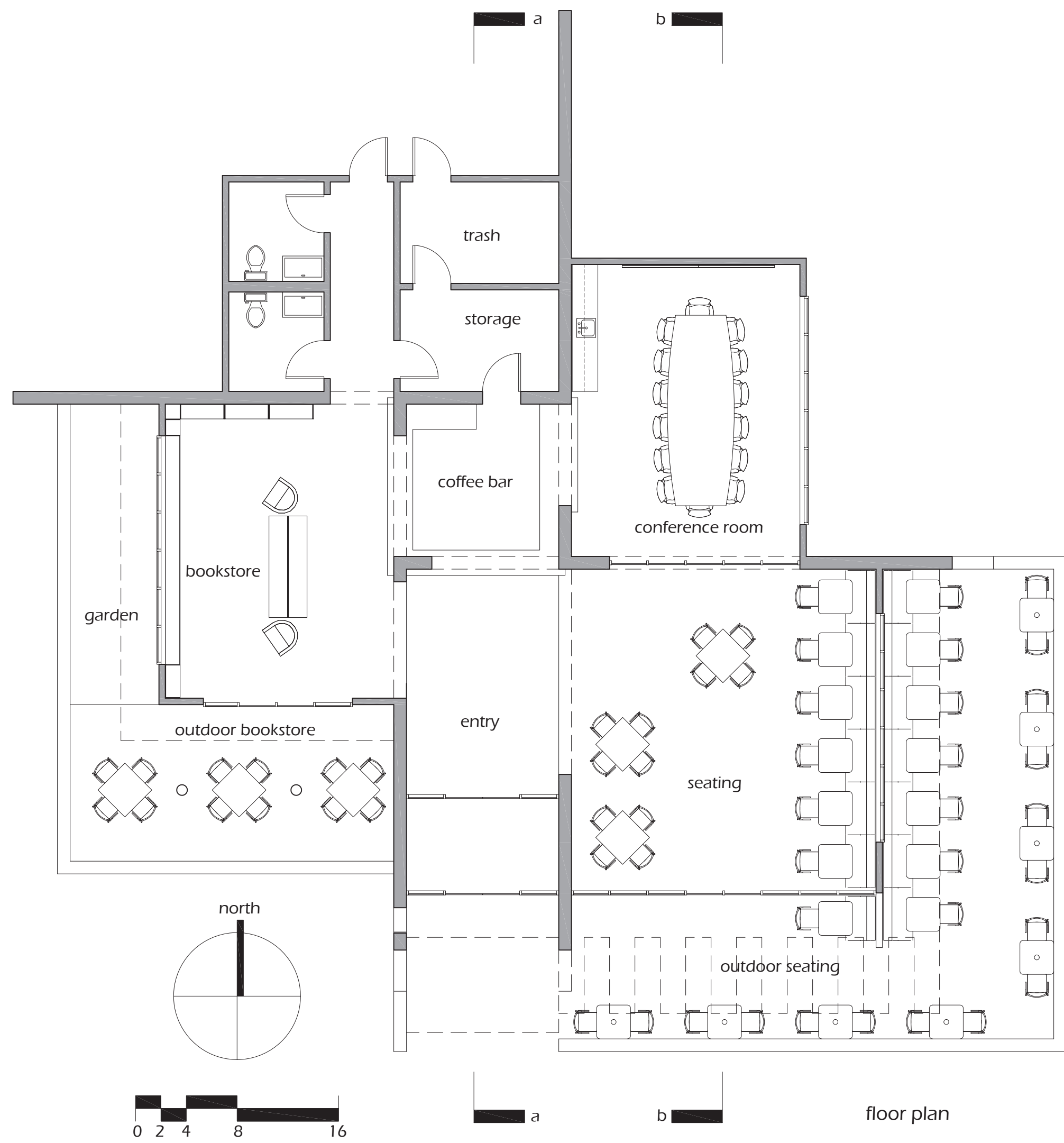


site plan

the concepts for the universal cafe are adaptability and sustainability. the design is such that it can easily be adapted to any corner orientation in phoenix. facade treatments were chosen based on how they would affect the sustainability of the building with large overhangs to provide shading and control solar gain.

the building takes the shape of a pinwheel with a central focus in the coffee bar service area. secondary spaces for seating, conference room, bookstore, and service areas are logically placed around the central focus. the roof has a rainwater collection system to recover greywater, and solar panels are placed on the south facing roof above the seating area to generate some of the power required to run the building.

tilt-up concrete is used with various treatments to create a layering of vocabulary in the walls. the red painted wall signifies the entrance to the building. the secondary walls that form the pinwheel are a terra cotta hue to reinforce the pinwheel concept.



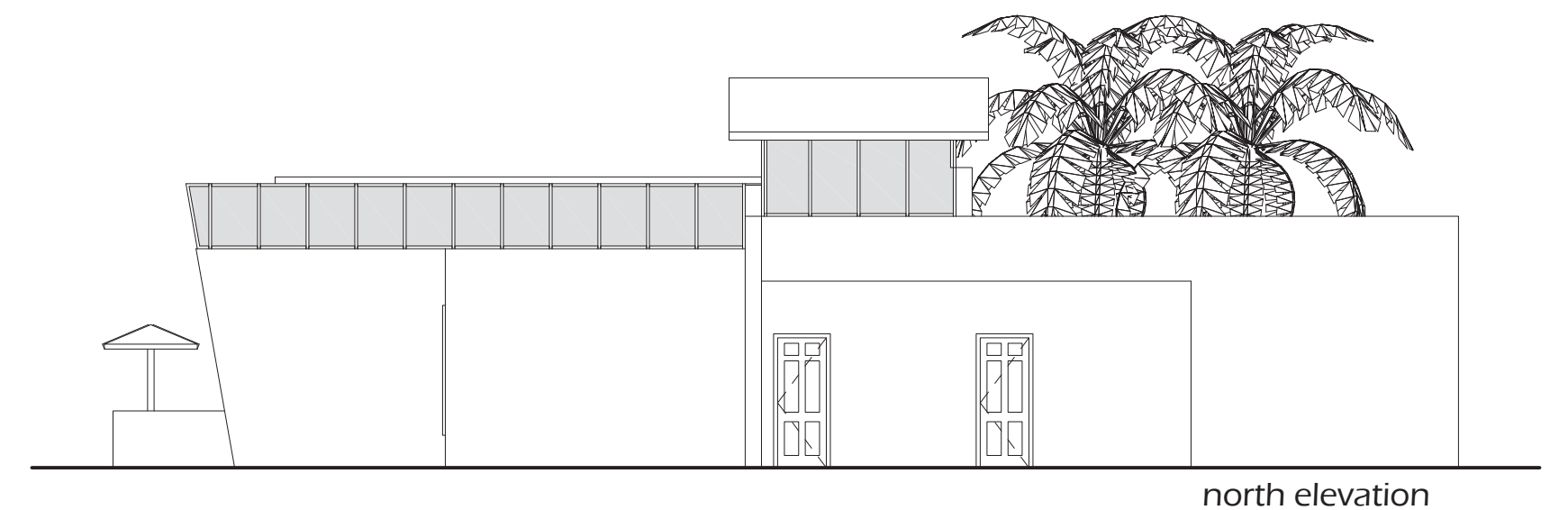
floor plan



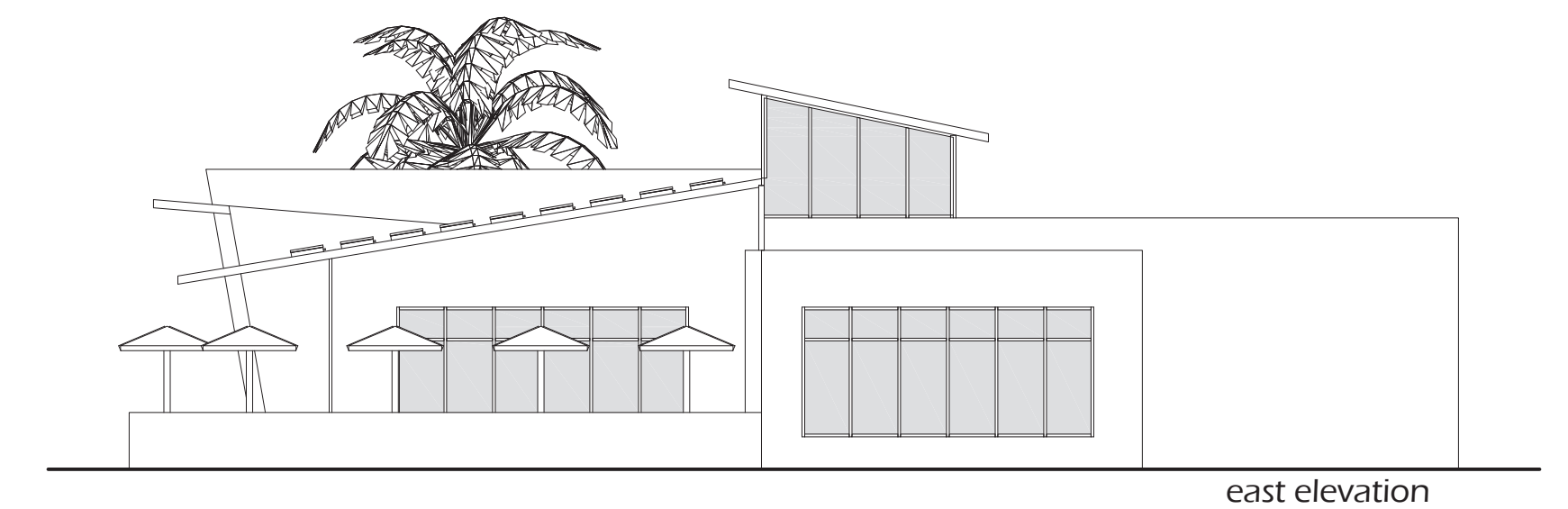
bookstore



southwest perspective



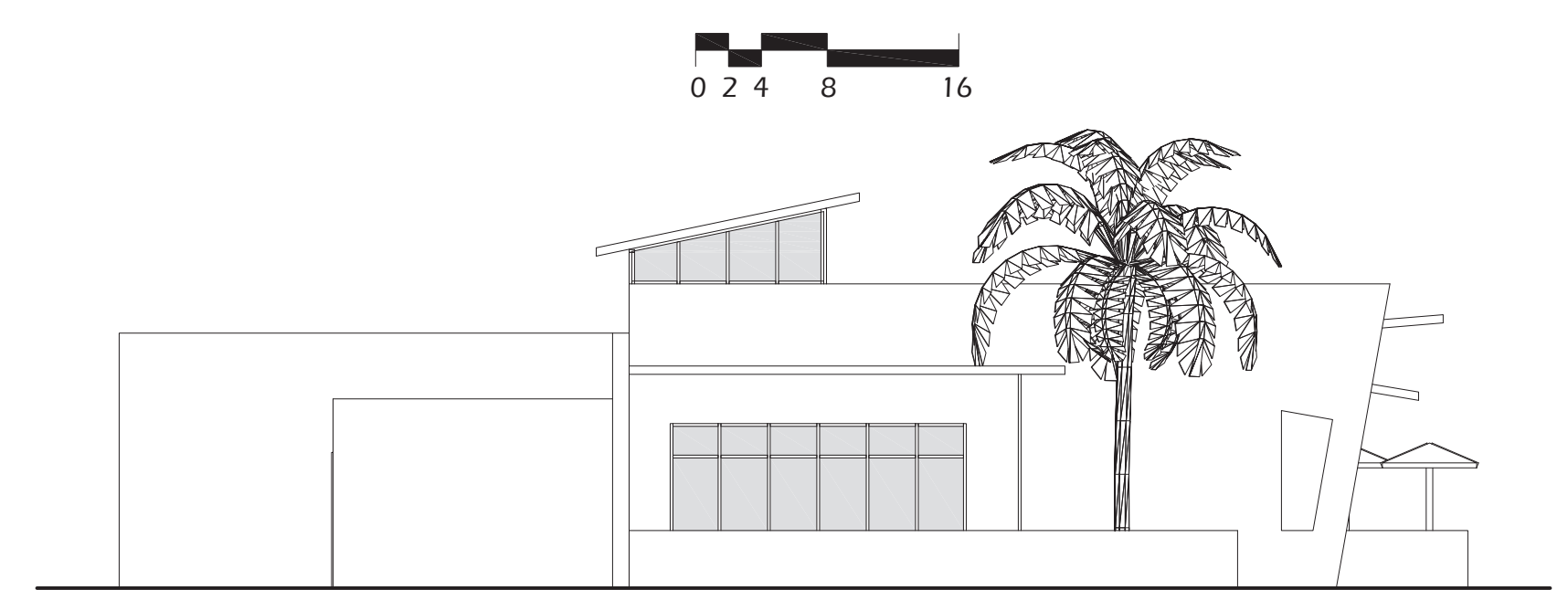
north elevation



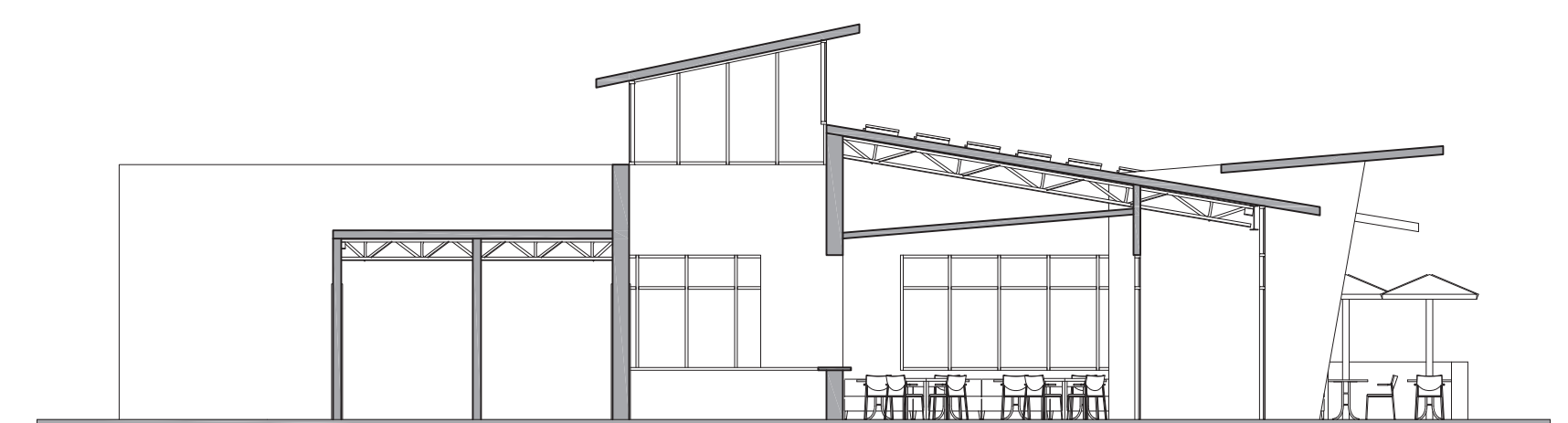
east elevation



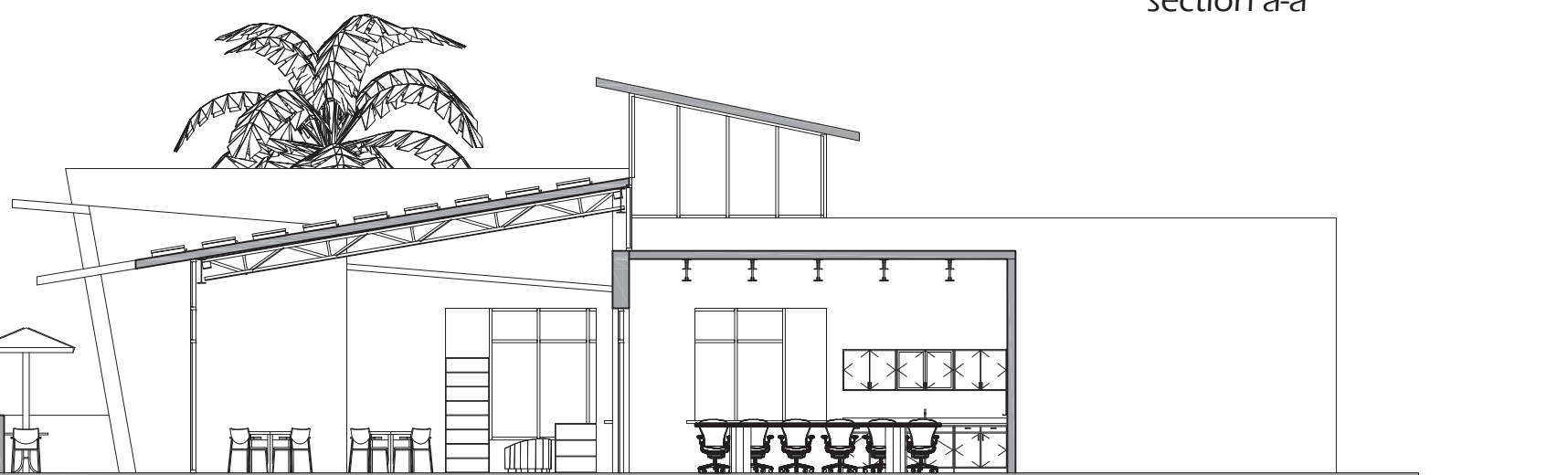
south elevation



west elevation



section a-a



section b-b



seating