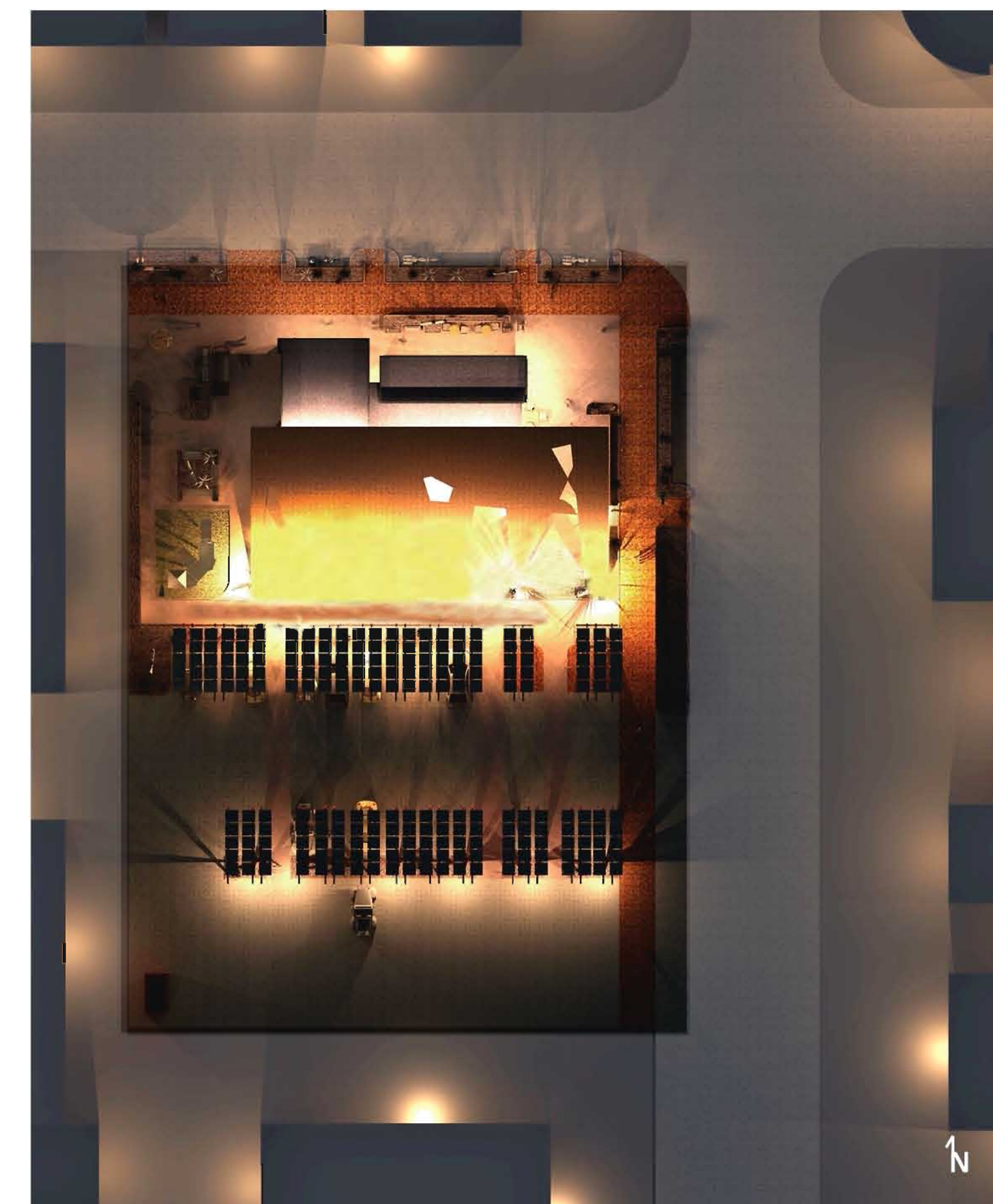


# Cafe' L' mur



N-E VIEW, MAIN ENTRY PLAZA



SITE PLAN  
NTS



## L'MUR (THE WALL)

- Two tilt-up panels with a 12-inch cavity in between and a seamless cap
- **Top panel** (12 inches thick) - able to **retain heat** from the southern sun it faces and heat up the cavity; **raised channels** on the 8:12 slope **direct rainwater** into a basin below ground, filtering through a gravel pit with **indigenous plants**, collected water used for irrigation and toilet flushing
- Cavity contains pipes able to **heat up water** for making coffee, another set of pipes provides **floor heating** for the coffee shop during the winter months, an underside **vent** can be opened during the winter months to heat up the shop and adjacent covered passage
- Lower panel, 6 inches thick, **traps heat** in its coffer located on the underside, allowing heat radiation back into the space during the evening hours



## WINDOWS

- Openings within the massive wall - indoor and outdoor sources of **natural light**
- **Operable skylight** - brings additional daylight into the coffee shop, illuminates the coffee preparation area, allows for **stack effect ventilation**
- Low-E, double pane insulated glass
- Maximum **daylight**, appropriate **shading**
- Monitors for indoor air quality and temperature



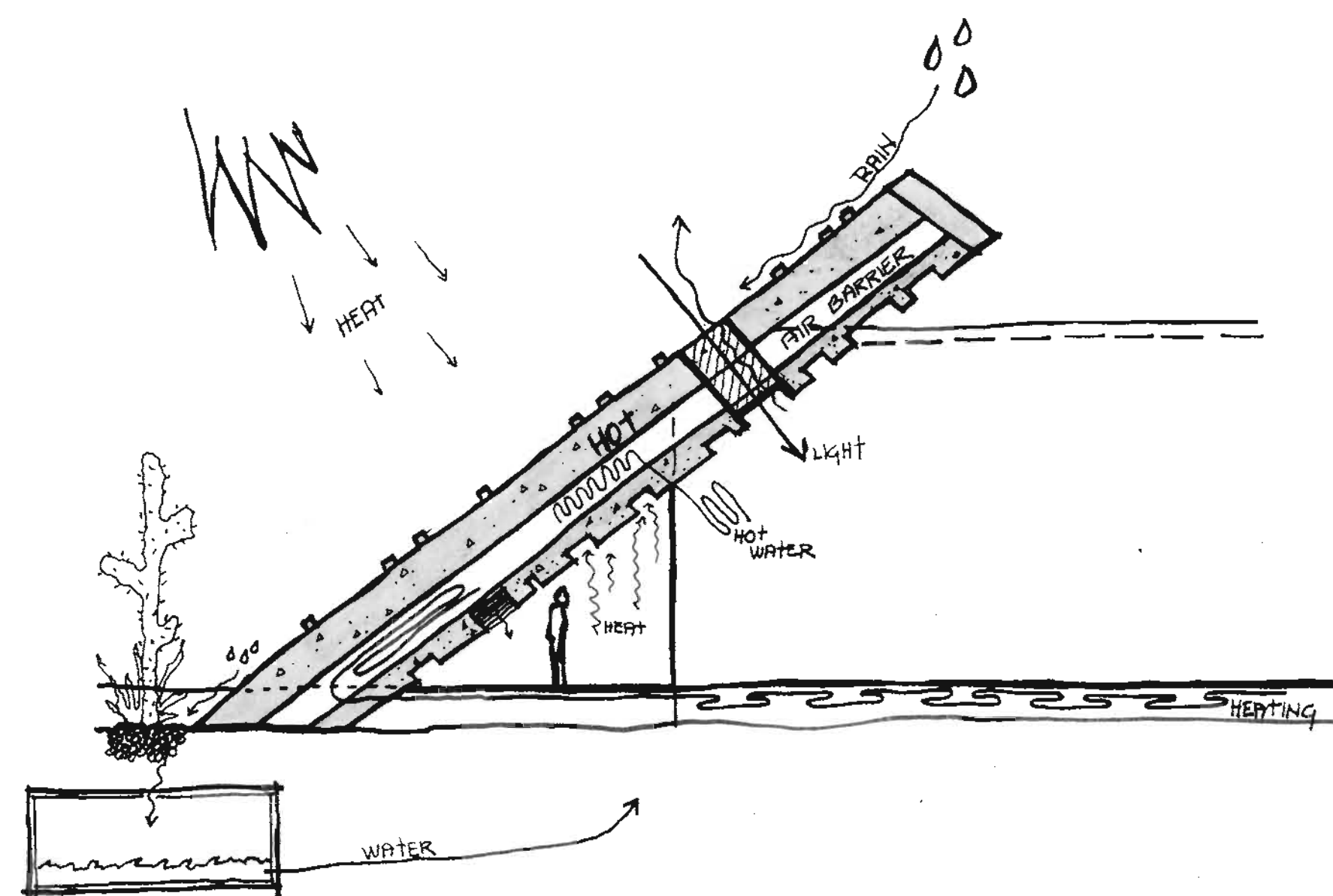
## PARKING

- Parking area - **PV panel** mount structure; **permeable** surface; clear detection of vehicular (motorized and non-powered) and pedestrian sections
- PV panels - provide **shade for vehicles and pedestrians**, allow for **off the grid** functioning of the coffee shop, unused energy sent back to the grid
- 100% **recycled steel** supports - allowing for electric car plug-in throughout the entire parking area
- **On street parking** - motorcycles and segways
- Drive thru window was intentionally omitted to promote sustainability and walkability



## MATERIALS

- **Local materials**, use of lava rock as an aggregate in concrete and fly-ash
- **Insulated** tilt-up panels sized appropriately, ranging from 12 inches to 6 inches, certain walls are load-bearing, offering support in sheer
- 100% **recycled steel** for building frame, reinforcement, and for PV panel parking structures; 90% recycled bike racks
- Recycled glass gravel on the roof deck - sun reflects off of the surface, creating reflective patterns on the massive wall



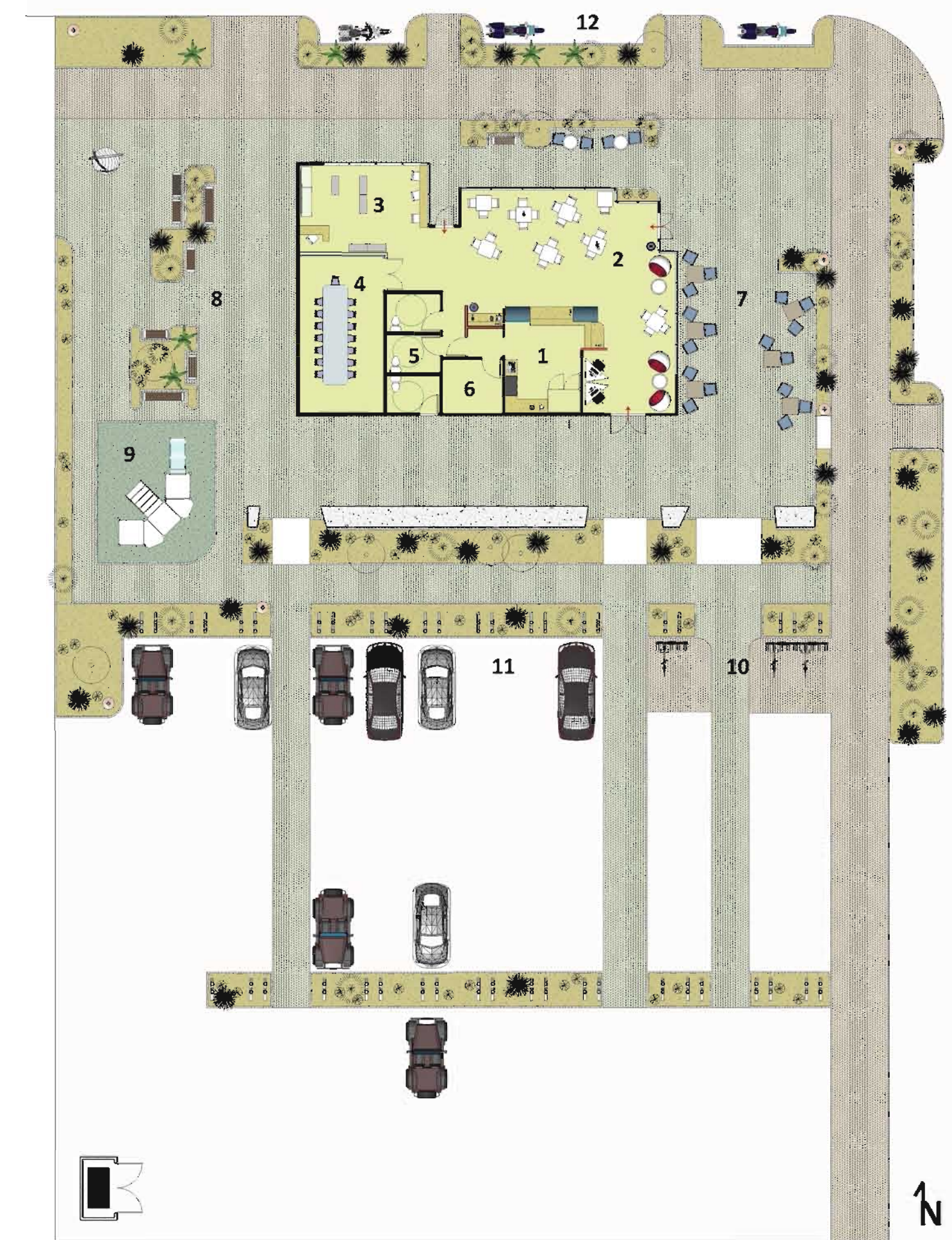
MASS WALL DIAGRAM



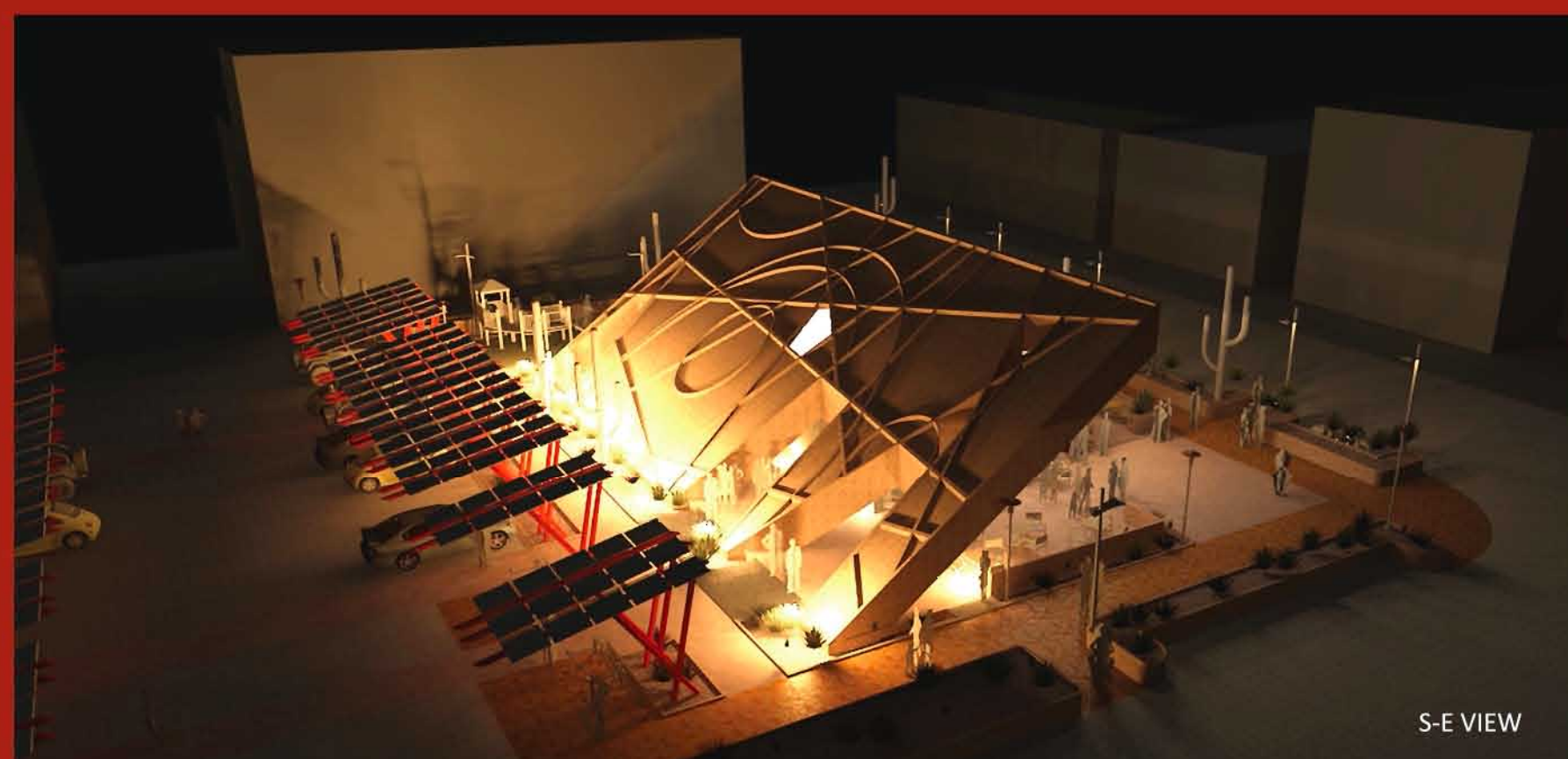
TILT-UP PANEL LAYOUT

## FLOORPLAN LEGEND

- 1 COFFEE PREPARATION
- 2 INDOOR SEATING AREA
- 3 BOOKSTORE
- 4 CONFERENCE ROOM
- 5 RESTROOMS (additional outdoor access for bikers, pedestrians and building visitors)
- 6 STORAGE
- 7 OUTDOOR SEATING AREA
- 8 OUTDOOR RECREATION / ENTERTAINMENT AREA
- 9 PLAYGROUND
- 10 BICYCLE PARKING
- 11 CAR PARKING / PLUG IN STATIONS
- 12 MOTORCYCLE / SEGWAY ADDITIONAL PARKING



FLOOR PLAN  
NTS



S-E VIEW



N-W VIEW, MOVIE NIGHT



INTERIOR VIEW