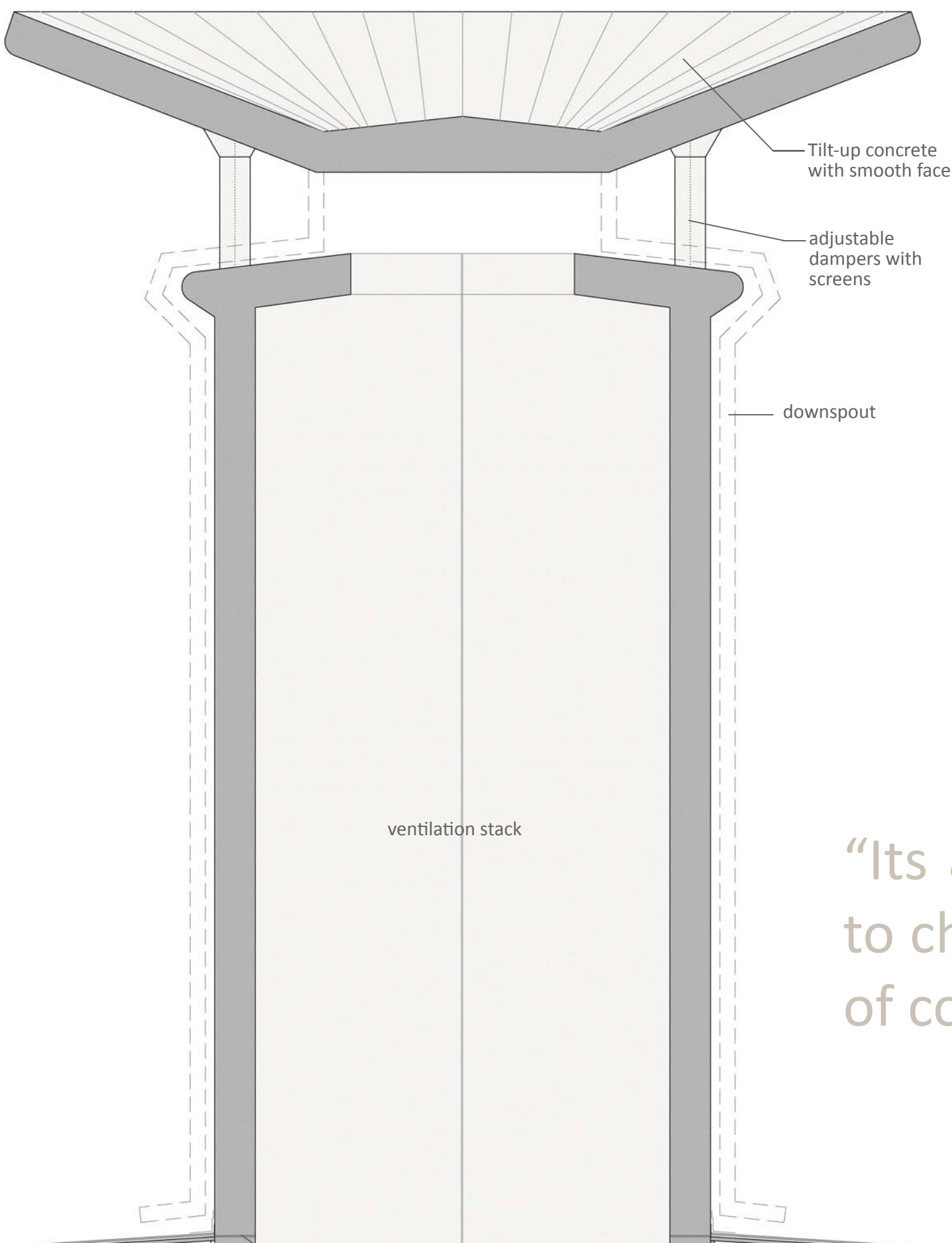
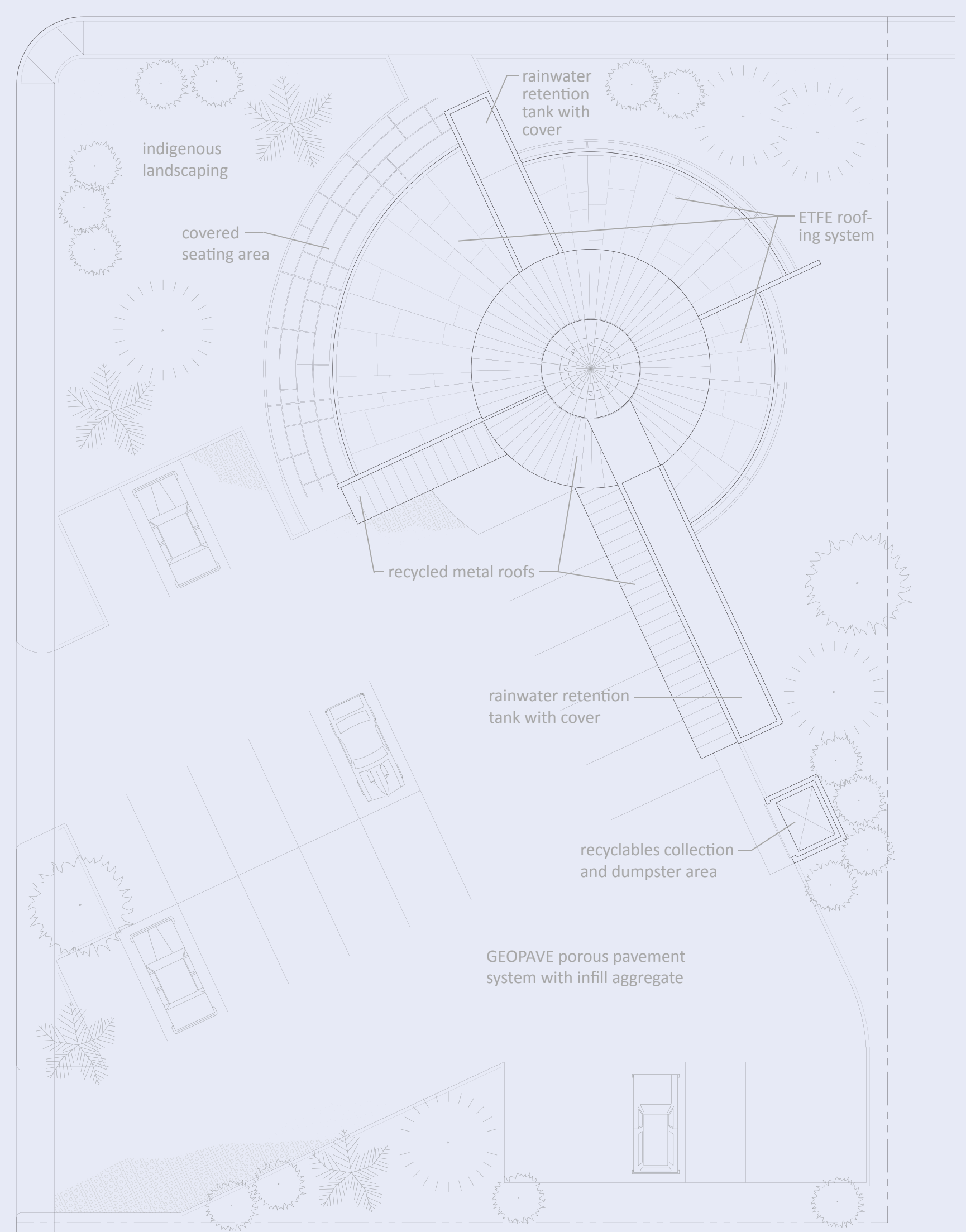
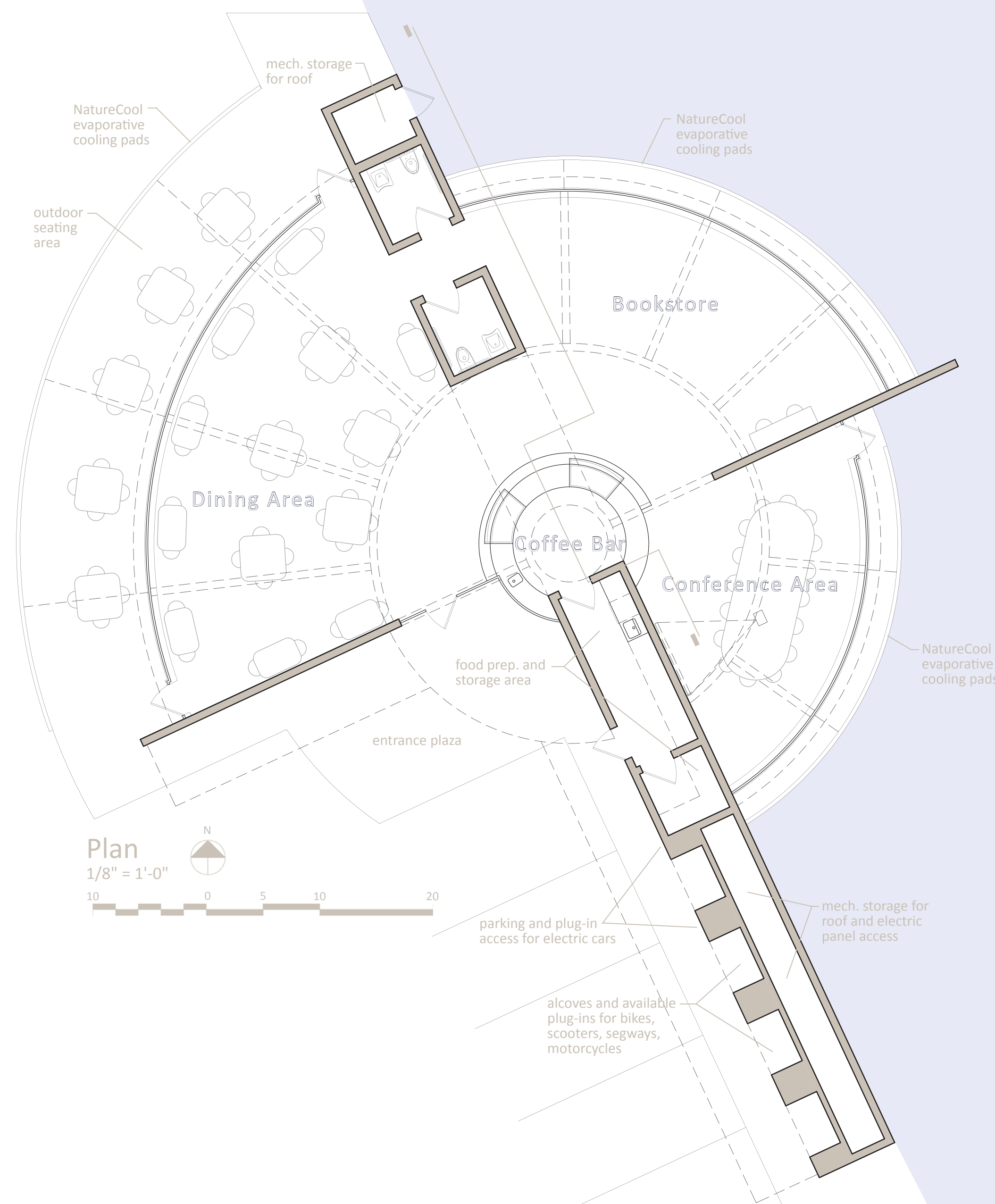


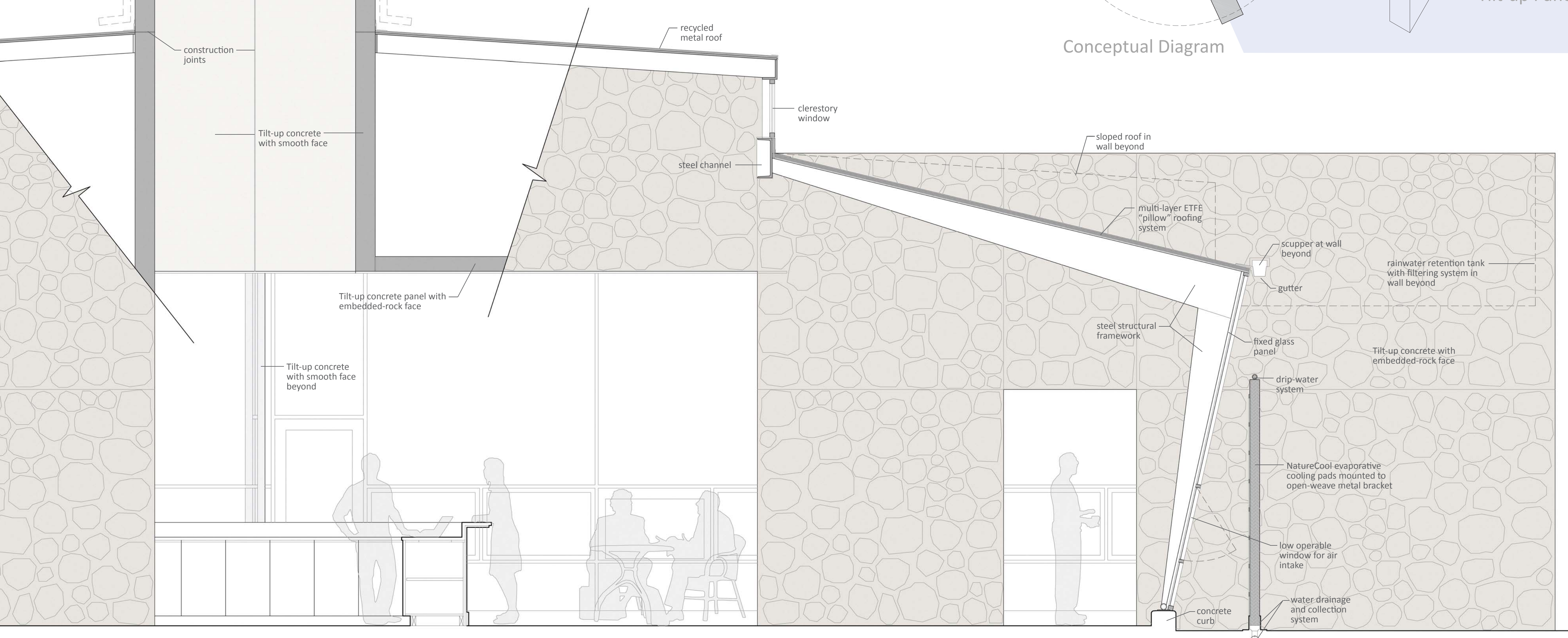
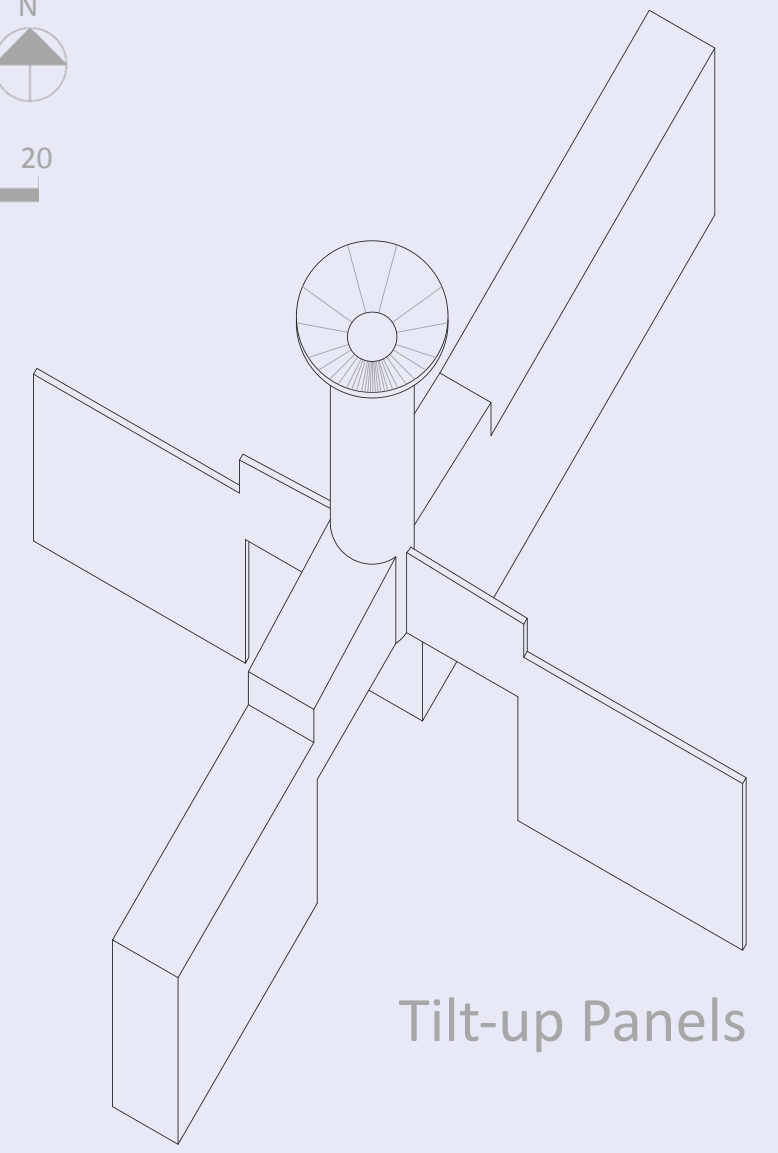
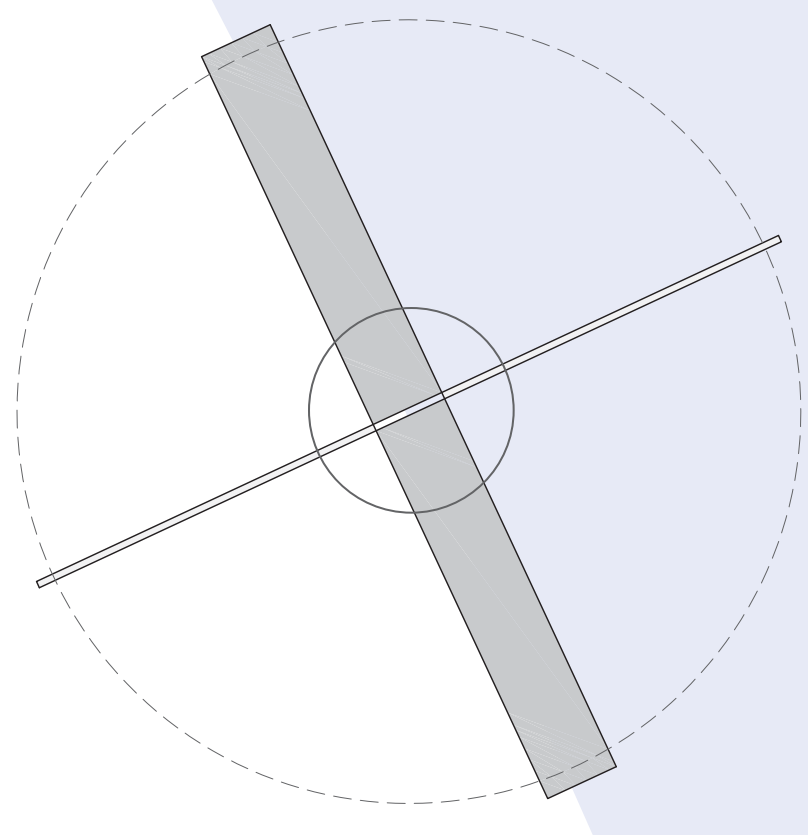
Bean Green Coffee House

a proposed design for a sustainable coffee shop in Phoenix, Arizona

This design focuses on **natural ventilation** through the use of **stack ventilation**, **cross-ventilation**, and **evaporative cooling panels**. The panels are kept wet with a drip system that feeds off of **rain-water collection** tanks in the top of the thick wall. These would be covered to keep solar heat-gain low. Sustainable features also include: a **low-impact permeable paving surface** for the parking lot; **recycled metal roofs**; and an **ETFE roof made from recycled plastic**. The design hopes to inspire the user to think about how they can impact their own environment - where they live and work - in a positive and sustaining way. Its not just coffee being served here; its a double shot of information, topped with a warm and bright atmosphere and sprinkled with good practice sense and a genuine concern for those to come.



"Its amazing how the World begins to change through the eyes of a cup of coffee." Donna A. Favors



Section
1/2" = 1'-0"