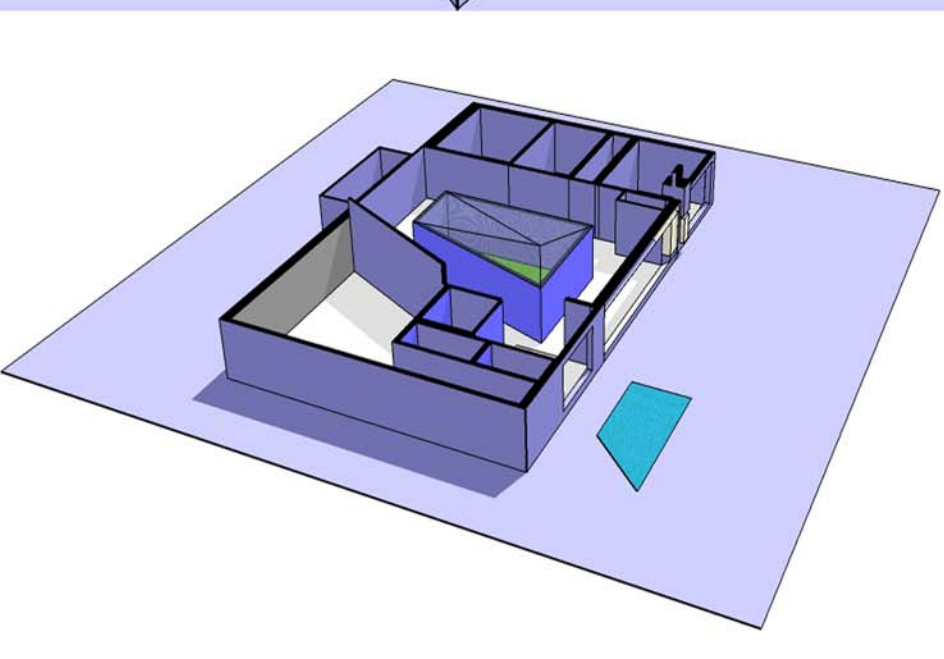
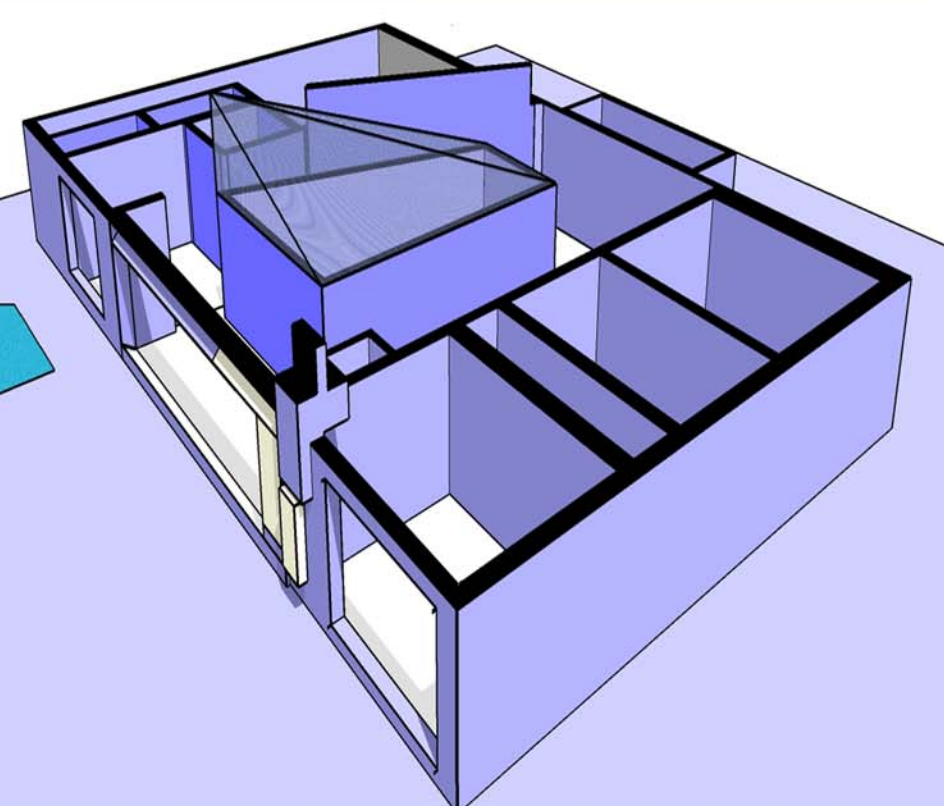
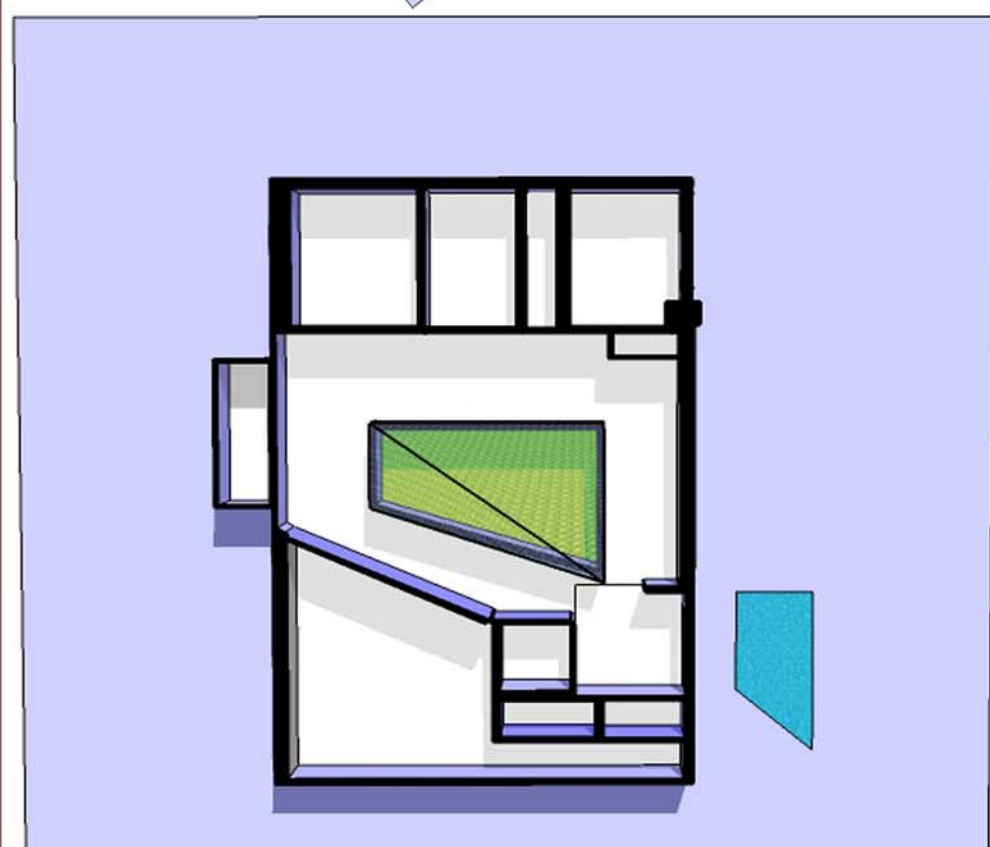
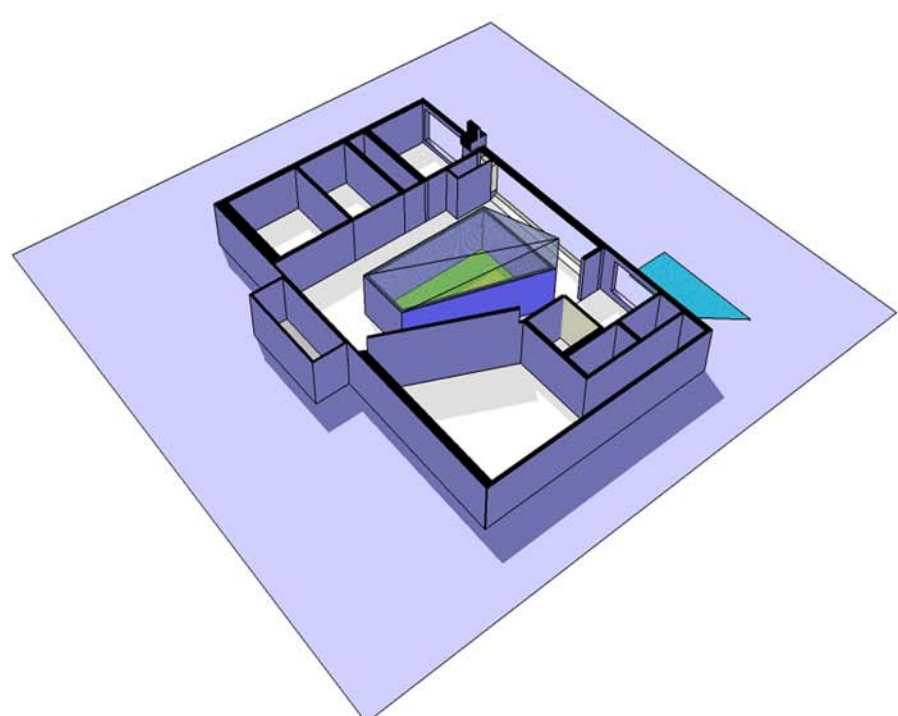
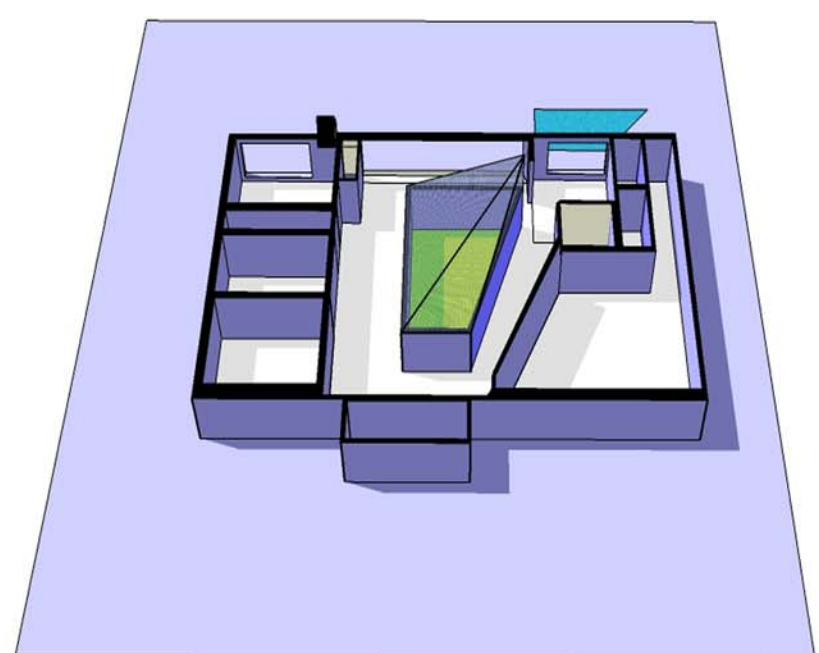
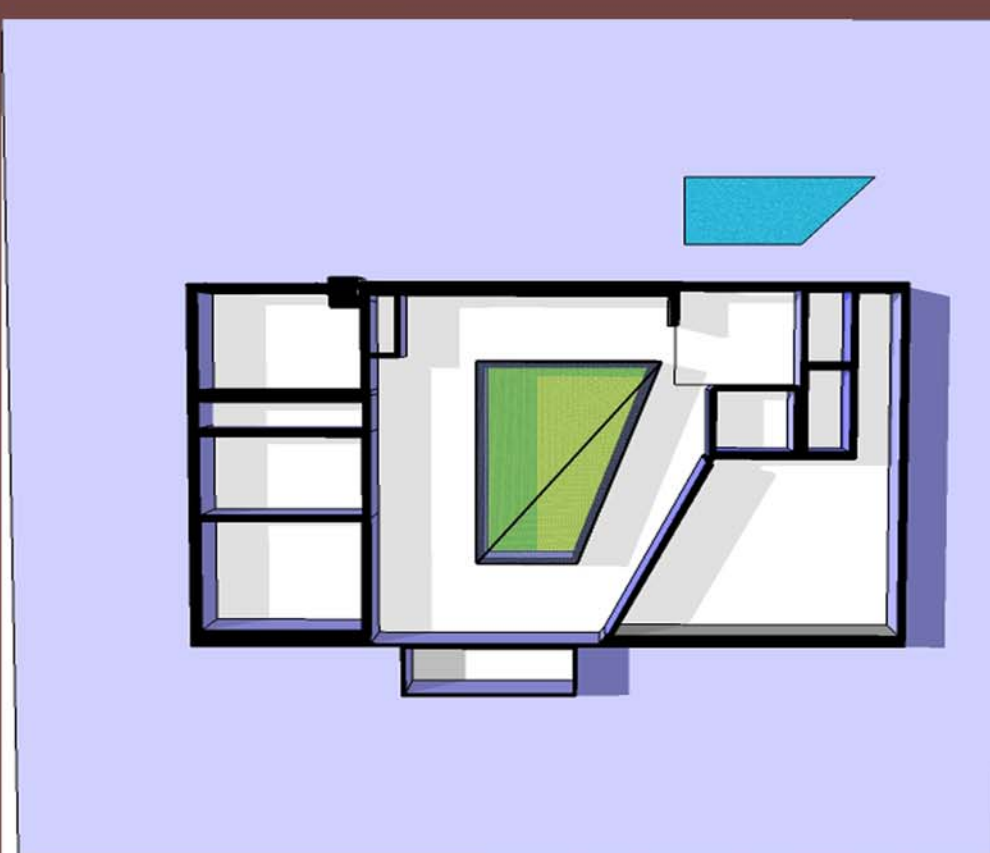


URBAN TRAPEZOID

CIAT - 5306 STUDIO I
 CARLOS J. COLON
 PROFESSOR D. CARLI, RA, AIA

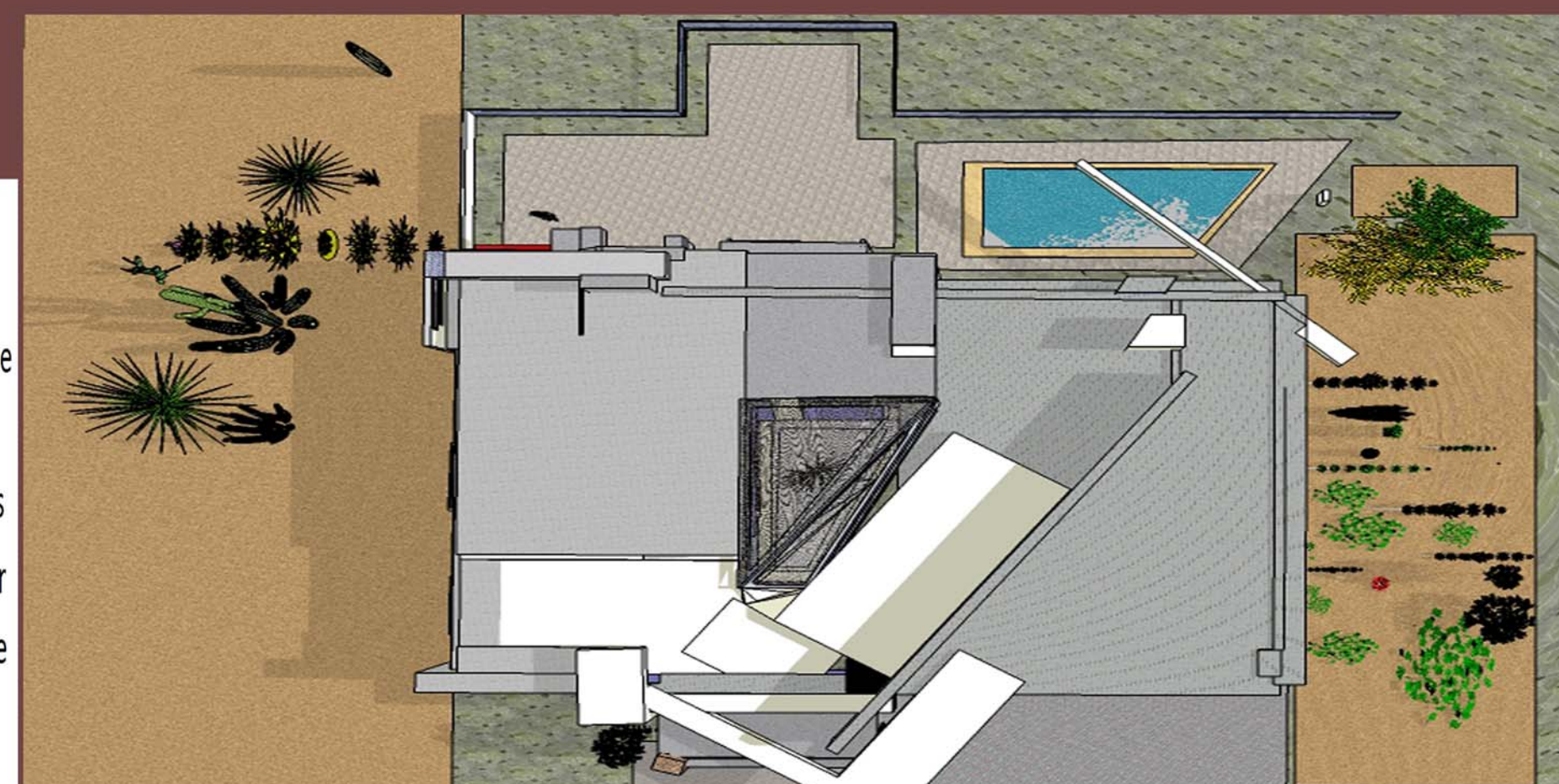
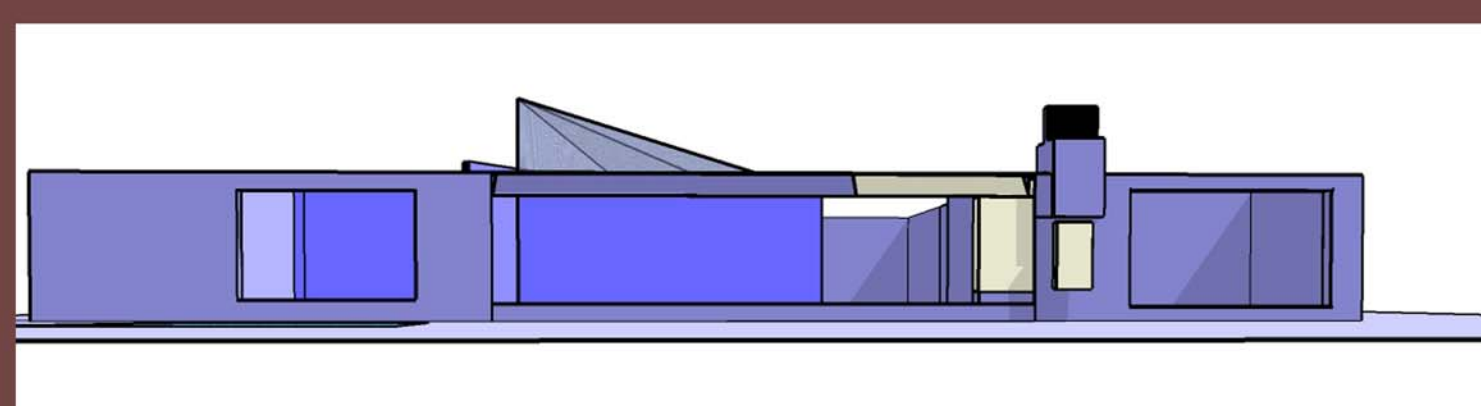
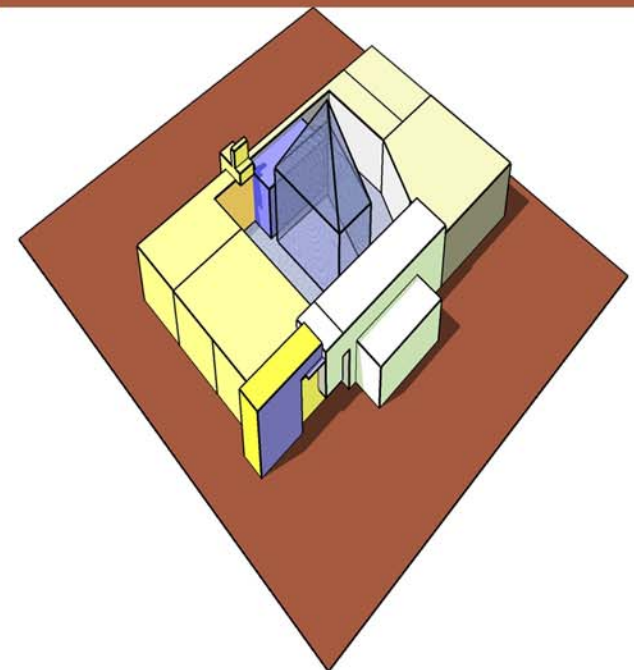
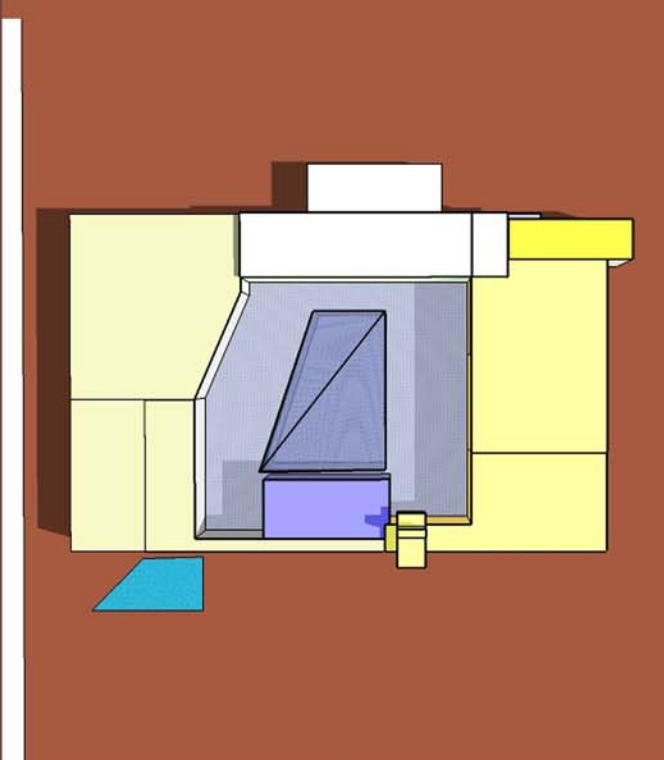
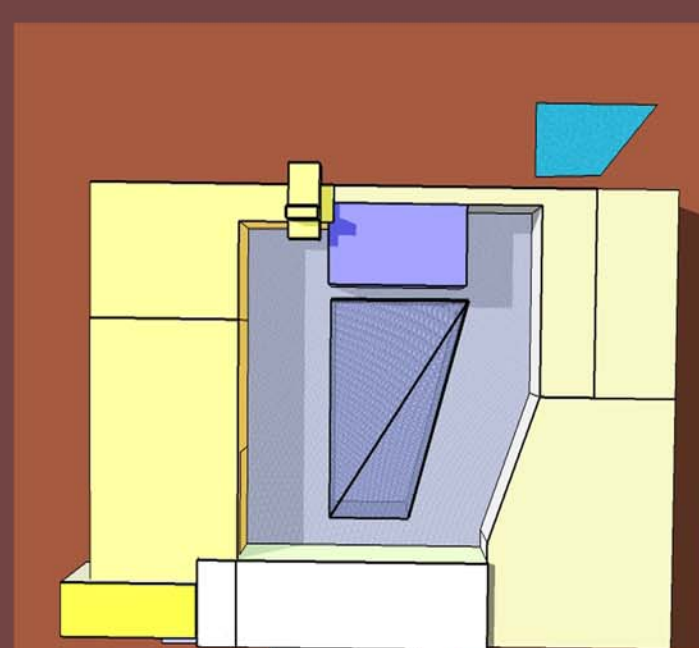
THE FOLLOWING PROJECT WAS CREATED AND DEVELOPED TO SUPPORT AN IDEA USING TILT-UP CONCRETE TECHNOLOGY IN THE DESIGN AND FUTURE CONSTRUCTION OF A SUBURBAN HOUSE INTERIOR SHAPED LIKE A TRAPEZOID. AFTER BRAINSTORMING FOR IDEAS FOR THE PROJECT, A SOLUTION TO THIS GEOMETRICAL PROBLEM CULMINATED IN A TRAPEZOID LIKE FORM.

The house is a one story, three bedroom ranch with two and a half bath, small swimming pool and a interior glass covered courtyard to let natural light into the house thru the center of the house Trapezoid shape that is reinforced in the house ceiling. The idea was to take the Trapezoid shape of the property site and design something alike, and to move the living room from the traditional forward space of the house to the rear of the house and able to connect important spaces or hierarchical spaces into one. As you walk in the house the interior space, forms a Trapezoid as you walk down the corridor always bearing to your left. The idea was to fit the shape of the site plan and reinforce it thru the house other dimensional spaces. The other lateral sides of the house were used to distribute the bedrooms, bathrooms, kitchen, a two car garage and living room. The living room is flanked by the master bedroom and the kitchen on the east elevation. The Tilt-up concrete walls were designed to hold and support the glass windows facing east. Due to it's size and volume, it was crucial to incorporate them within the 12" thick walls. The design holds an easy to built and erect supporting wall system. Three of them are 90 degree angles and one is technically 45 degree angle at ground level. The concrete is unpainted and treated to keep it's natural Portland cement color look. Other materials were used throughout the house to enhance and combine with the concrete and express contrast with concrete materials. Some of these materials used were Cherry wood in the front doors, Kitchen cabinets and bathroom equipment. Aluminum was used to construct the frame of the east elevation glass windows and the glass diamond shape piece on top of the house that overlooks the interior courtyard glass walls. The interior courtyard is made of 1" thick lightly smoked stained glass to maintain moderate level of light clarity in all directions of the house. The glass walls also have sliding doors that help control the outside air during the day and the night air intake at night.



FLOOR PLANS VIEWS

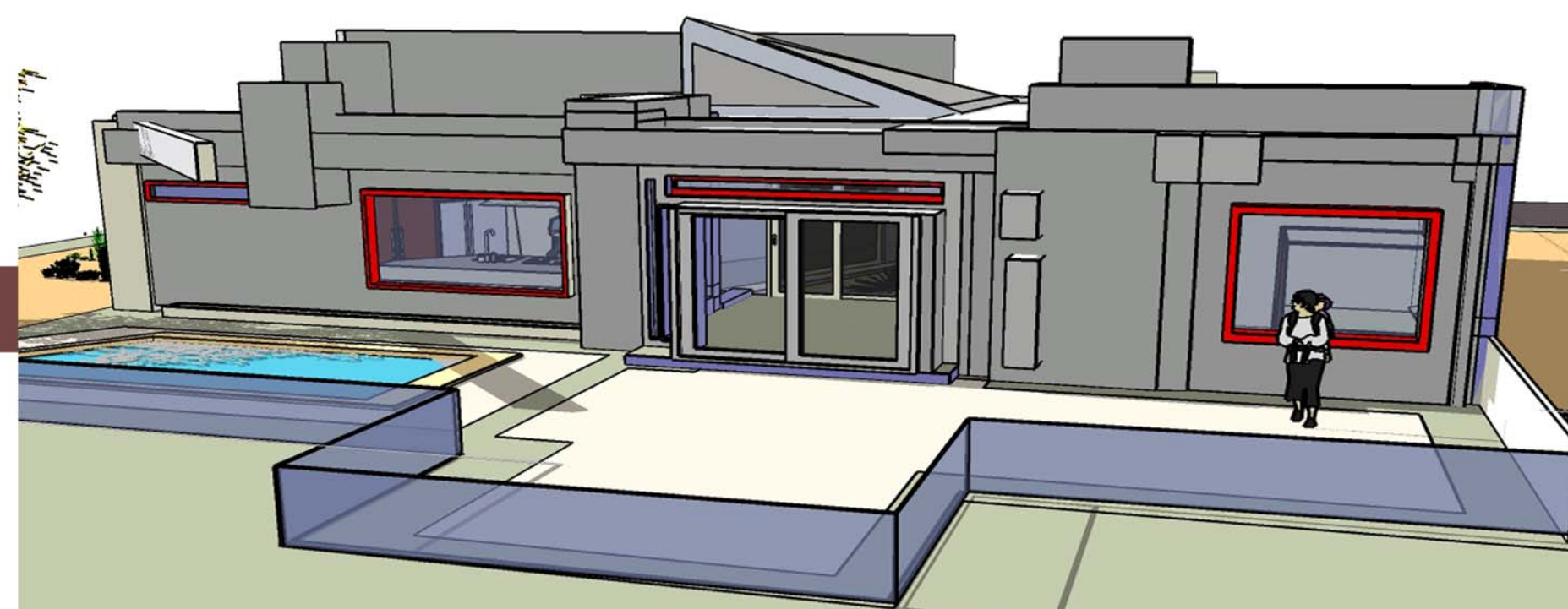
EAST ELEVATION VIEW



AERIAL VIEW



ISO AERIAL ANGLE VIEW



EAST VIEW



SOUTH VIEW (BEDROOMS)



FRONT VIEW ANGLE