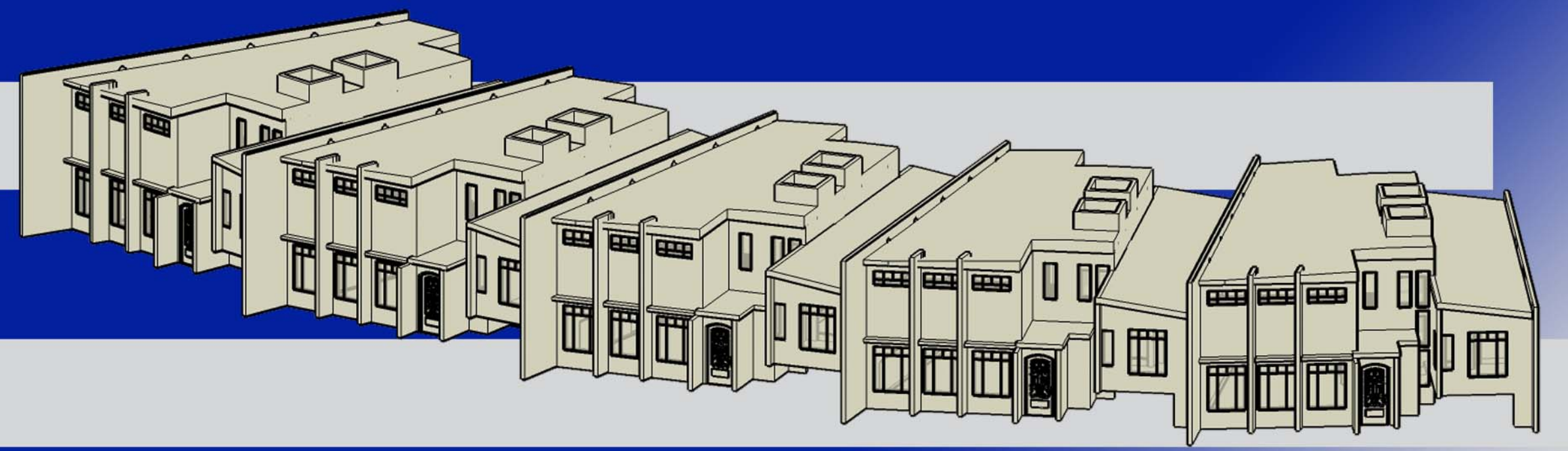
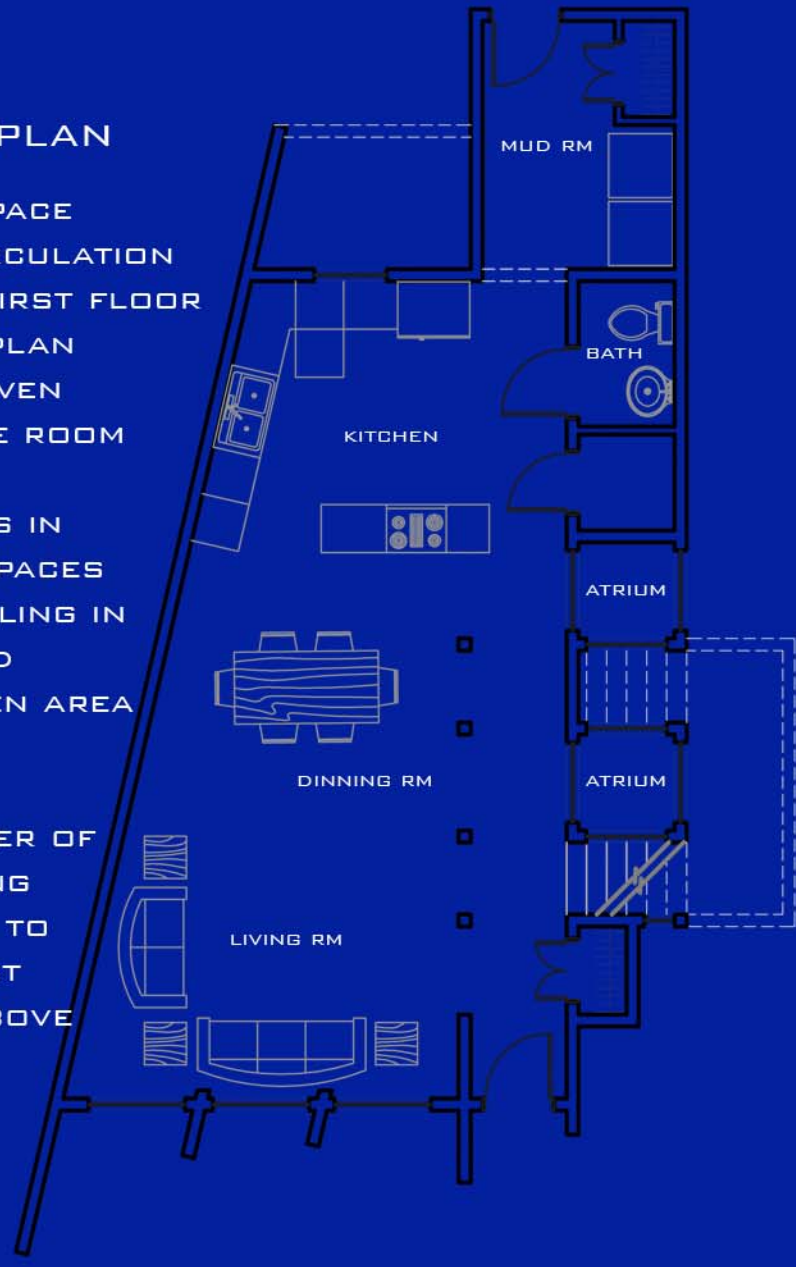


# STORM RESISTANT HOUSING



## FIRST FLOOR PLAN

- ALL PUBLIC SPACE AND PUBLIC CIRCULATION PROVIDED ON FIRST FLOOR
- OPEN FLOOR PLAN ALLOWING AN EVEN FLOW FROM ONE ROOM TO ANOTHER
- OPEN CEILINGS IN MORE PUBLIC SPACES & LOWERED CEILING IN ENTRANCE AND DINNING/KITCHEN AREA
- TWO ATRIUM PUNCTURES THROUGH CENTER OF HOUSE ALLOWING NATURAL LIGHT TO ENTER THE FIRST FLOOR FROM ABOVE



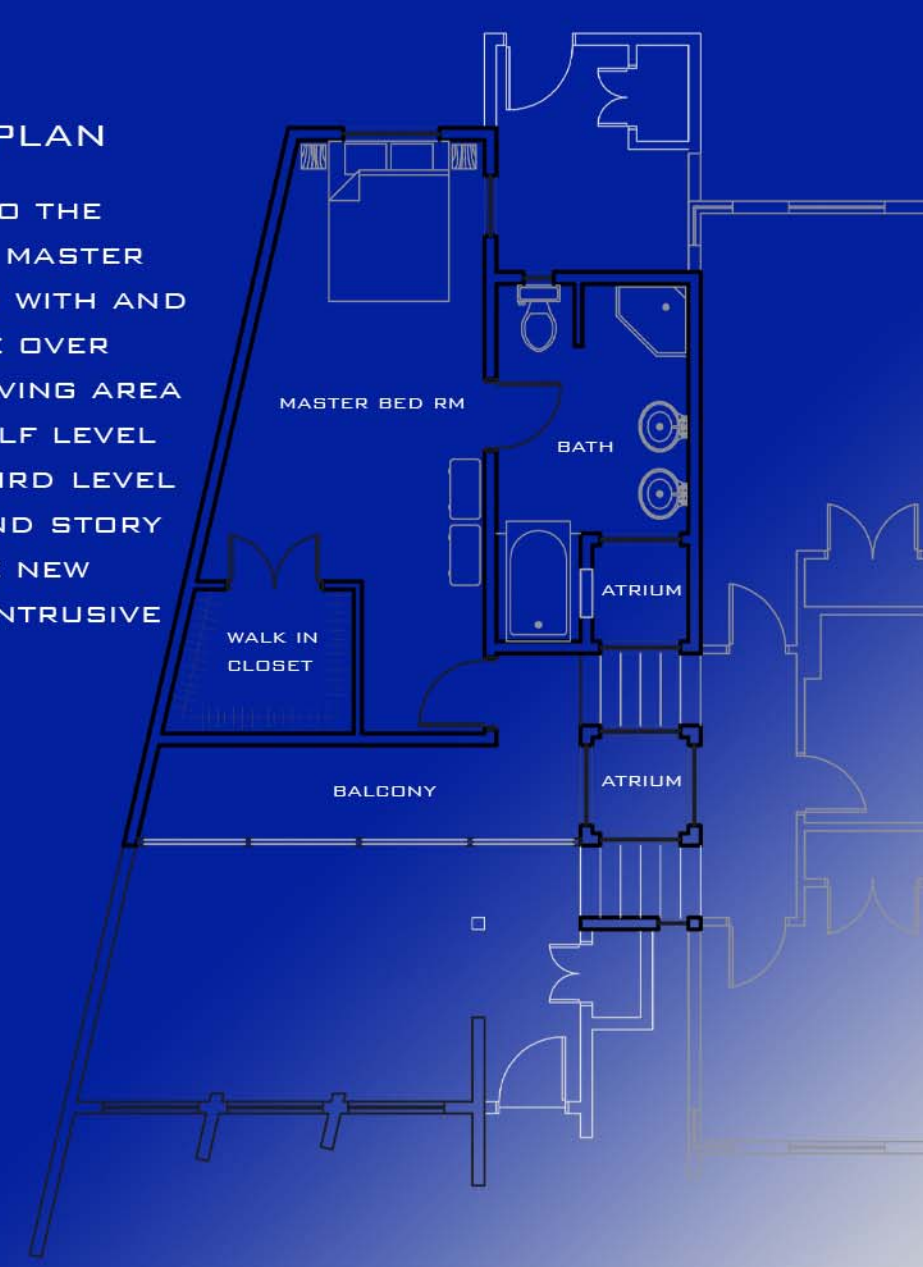
## SECOND FLOOR PLAN

- HALF A FLOOR UP, MORE PRIVATE SPACES, INCLUDING TWO BEDROOMS AND A FULL BATH
- THAT HALF LEVEL CREATES SPACE UNDER THE LEVEL FOR THE FLOW OF WATER TO PASS BY, ALSO ALLOWING FOR STORAGE UNDER SECOND LEVEL
- THE ATRIUM SPACE ALLOWS NATURAL LIGHT FROM ABOVE TO ENTER INTO THE BEDROOMS.

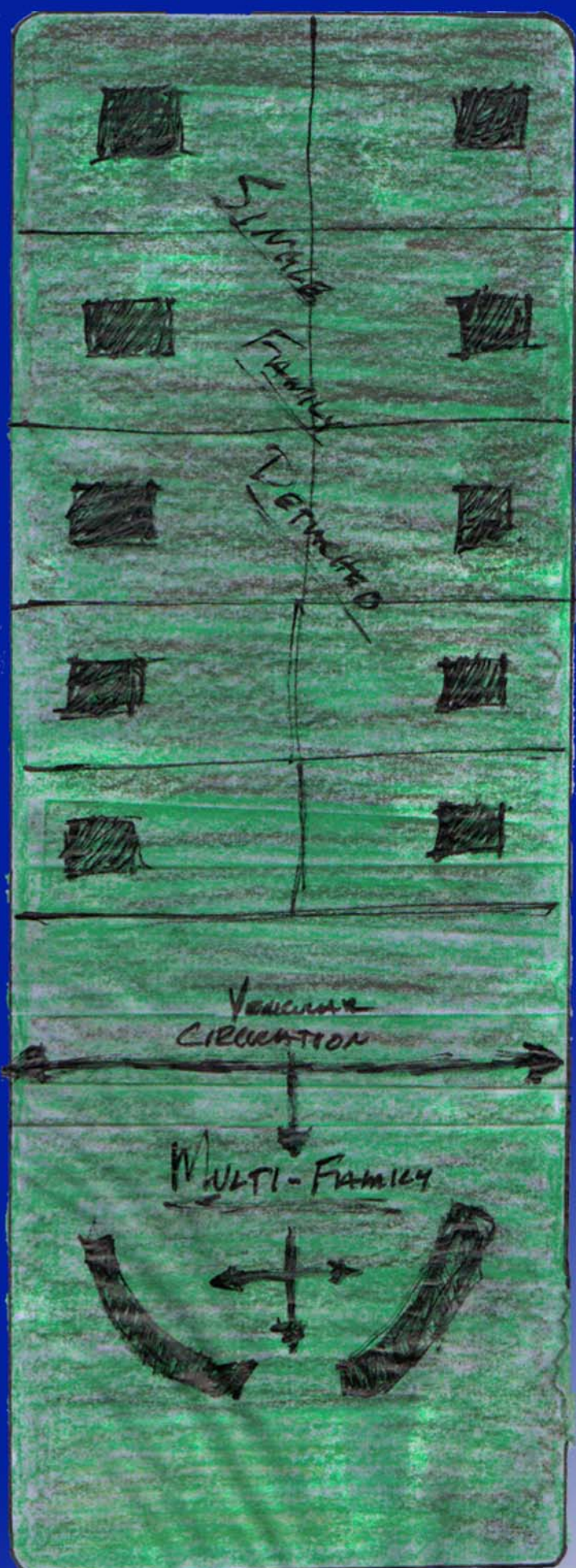


## THIRD FLOOR PLAN

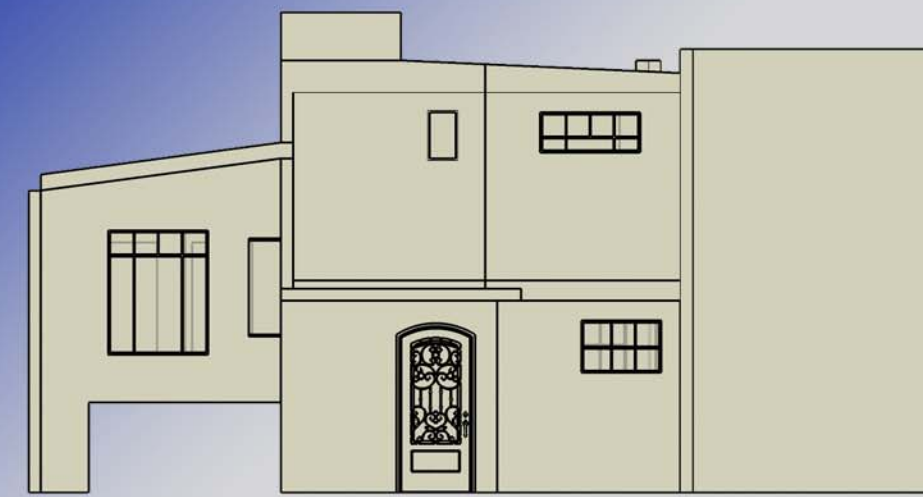
- CONTINUING TO THE THIRD LEVEL, A MASTER SUIT IS FORMED WITH AND BALCONY SPACE OVERLOOKING THE LIVING AREA
- CREATING A HALF LEVEL ALLOWS THE THIRD LEVEL TO BE AT SECOND STORY HEIGHT, SO THE NEW HOME IS LESS INTRUSIVE ON THE SITE



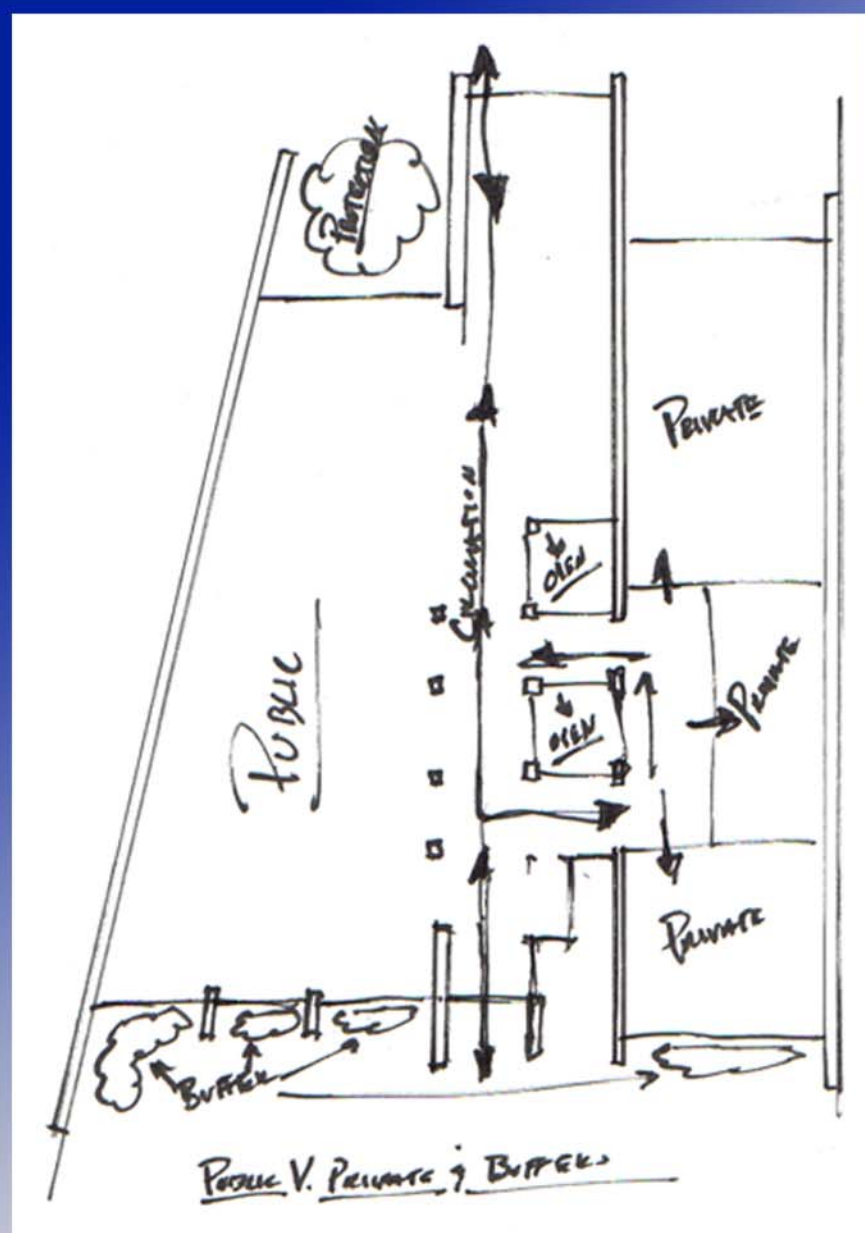
## CONCEPTUAL PLANNING



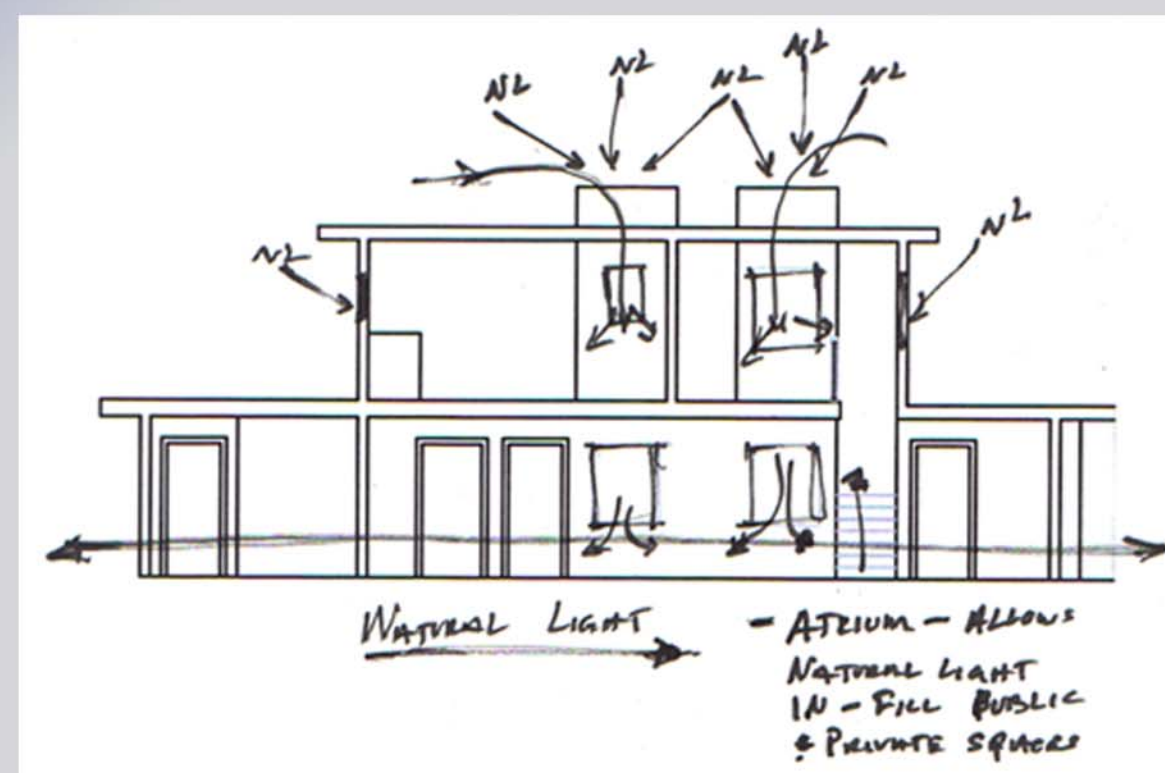
FRONT ELEVATION



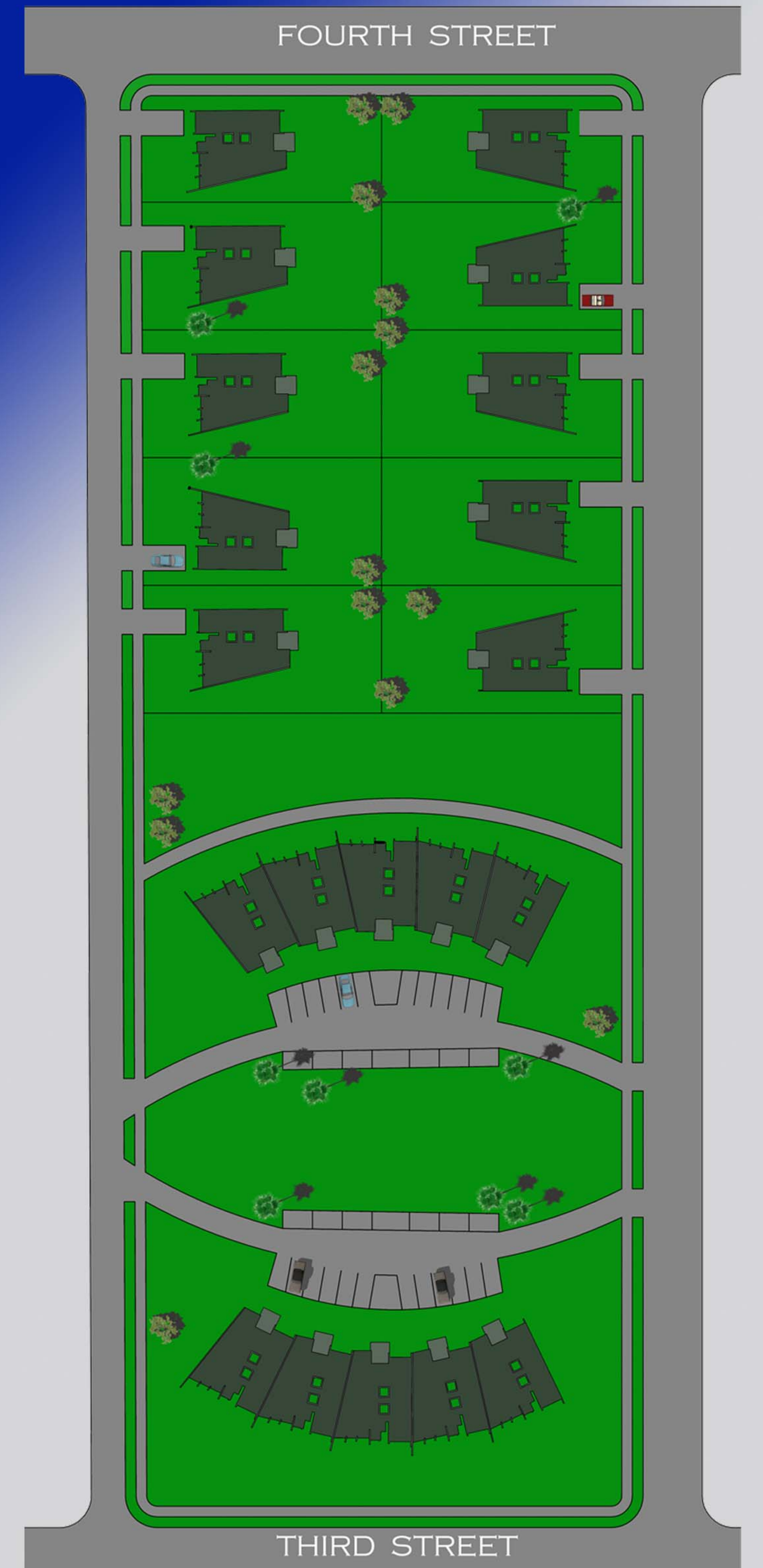
REAR ELEVATION



- WITH PRIVATE V. PUBLIC SPACES AND THE FLOW OF CIRCULATION



- WITH CONCERNS OF NATURAL LIGHT EMITTED FROM ABOVE INTO SPACES



CONCEPTUAL SITE PLAN



BILOXI, MISSISSIPPI  
AERIAL SITE LOCATION

- WITH LAYOUT OF THE PARCEL FOR VEHICLE CIRCULATION AND SINGLE FAMILY UNITS COMPARED TO MULTI FAMILY UNITS